



Concept to completion...
...**one service**



A MDSAFE BRAND



Contents

Welcome	4 - 5
Balustrade Designs	6 - 7
Stainless Steel	8 - 19
Coated Finish	20 - 25
Flat Bar Baluster	26 - 27
Structural Glass	28 - 43
Hardwood Handrail	44 - 45
Architectural	46 - 53
Our Services	54 - 55



Welcome

Welcome to Regal Balustrades, specialists in the design and manufacture of bespoke balustrades, and handrail systems, structural glass and associated architectural metalwork.

Having been established for over 23 years, we provide our clients with contemporary, reliable, quality systems and service. Our designs are bespoke and commissioned by global corporations and small businesses alike, who have demanding requirements for aesthetics, durability and flexibility.

At Regal Balustrades we only work with the highest quality materials and components and this, coupled with our industry-leading design capabilities, ensures our clients benefit from the ultimate turnkey solution.

We look forward to working with you to fulfil your requirements.

Our Mission

Our mission is to produce the right product for the right application, on time, within a budget and with the highest quality service.



Balustrade Designs



Stainless Steel

An extensively developed, sleek and prestigious framed balustrade manufactured from tubular stainless steel. As an industry renowned product, the benefits of this bespoke system are neat detailing, seamless flows and weld-free appearance.



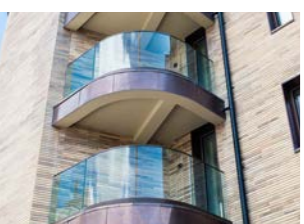
Coated Finish

An attractive balustrade design with either polyester powder coated, or nylon coated finish available in most RAL colours, providing a perfect balance of durability, quality, as well as a visual complement in any environment.



Flat Bar Baluster

The Flat Bar Baluster design offers a choice with either single or double flat balusters, available in either stainless steel or powder coated steel. Each one is individually manufactured so you can create bespoke feature shapes through either laser or water-jet cutting.



Structural Glass

The Structural Glass design combines elegant minimal look with structural strength and robust performance, offering everything you could need from glass balustrade systems in one package. Suitable for internal or external application, the design has been refined through careful development based on years of expertise so that you get the perfect frameless glass balustrades system.



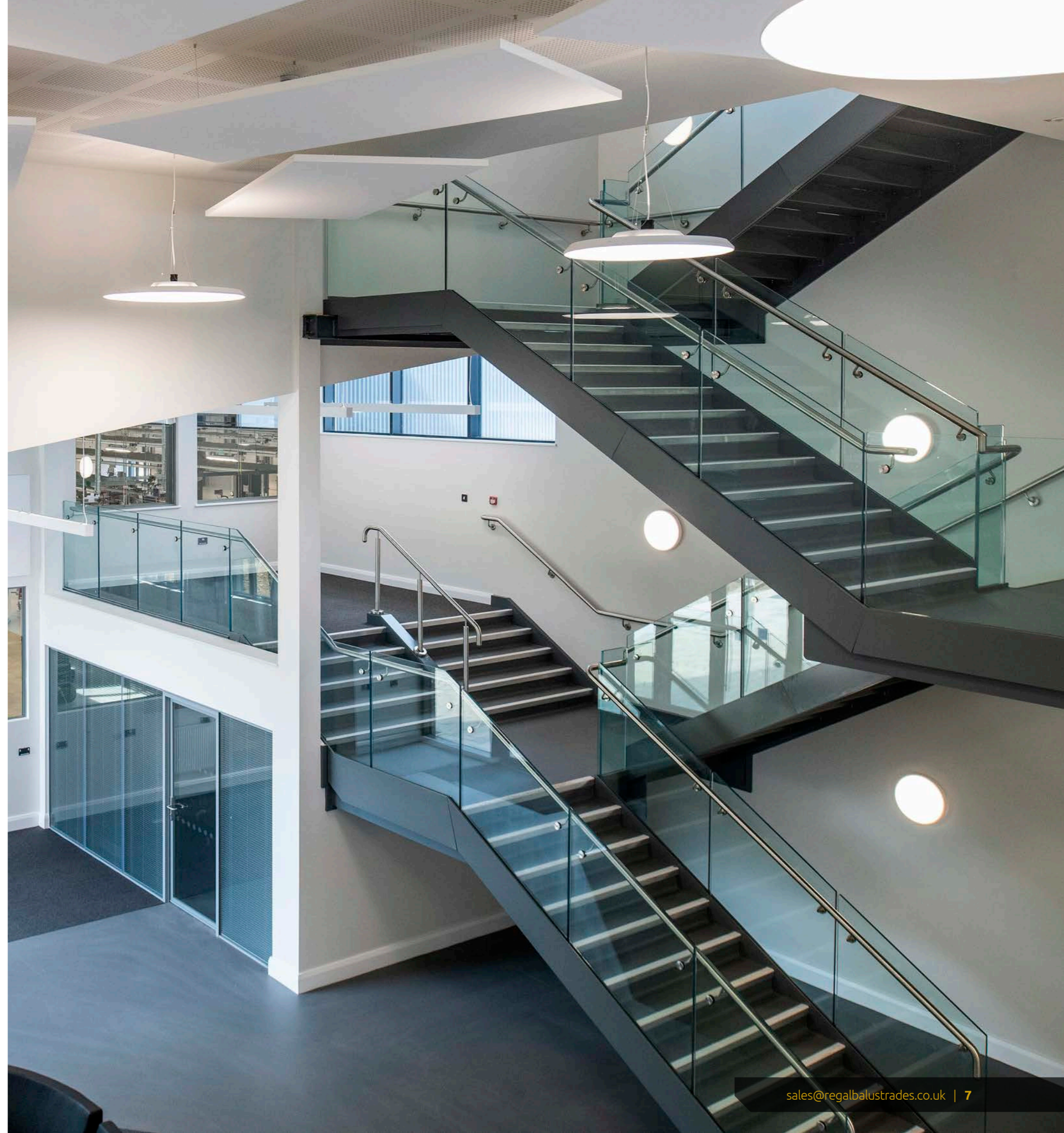
Hardwood Handrail

The Hardwood Handrail design uses unique high strength jointing methods within the timber handrail which means no core rail is required, dramatically improving the aesthetic impact of the range and enabling smooth, flowing corners and bends. All hardwood products are lacquered for protection and durability.



Architectural

With the flexibility to work alongside lead designers and architects, we are able to recommend and assist in the design and installation process to help create unique balustrade solutions and associated architectural metalwork packages.





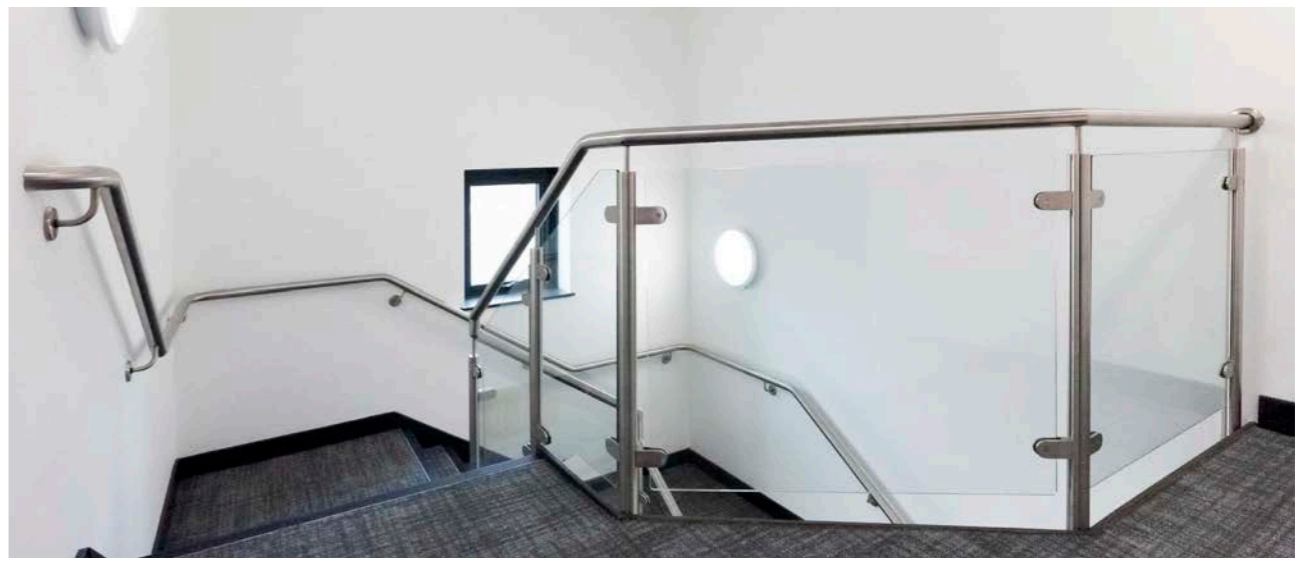
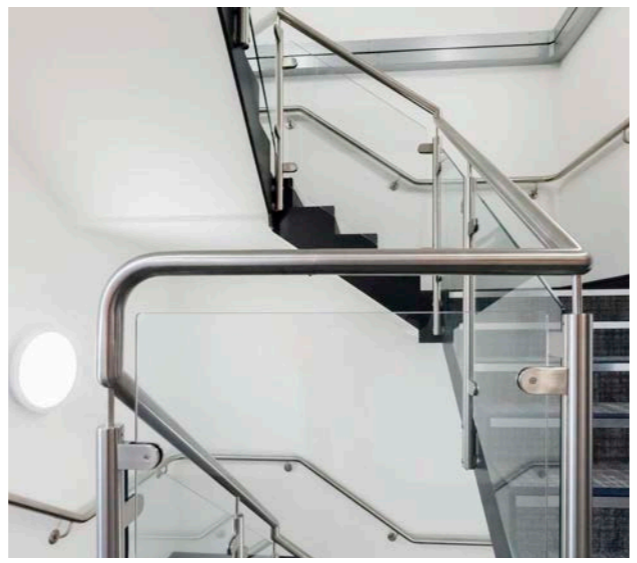
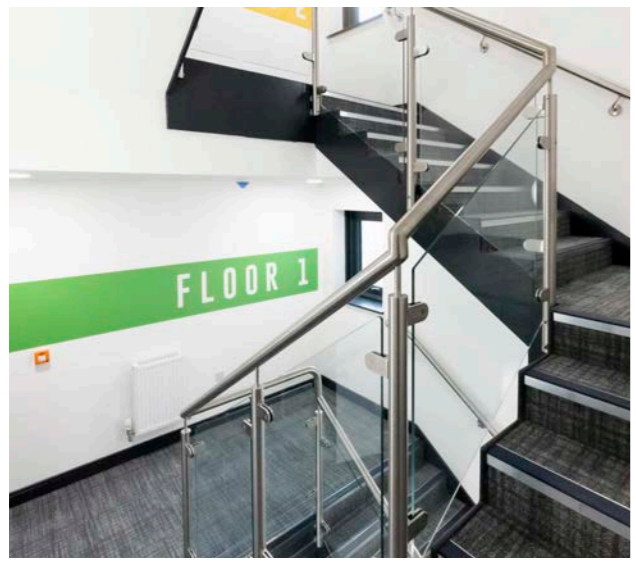
Key Worker Accomodation

Yeovil Hospital

- Architect:** One Creative Environments
- Contractor:** Speller Metcalfe Construction
- Project Value:** Circa £84,000
- Design:** Stainless Steel
- Features:**
- 50mm dia. satin polished 304 grade stainless steel balusters and handrail
 - 10mm clear toughened glass infill with 'D' type glass clamps

"I was very impressed with the service received" and "I would be happy to work with the team again who offered an excellent service and product"

Dave
Project Lead at Speller Metcalfe Construction

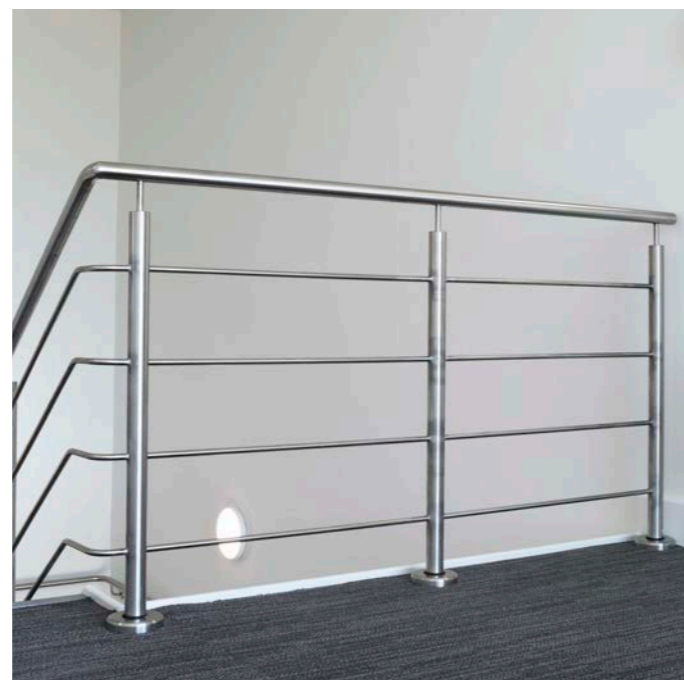
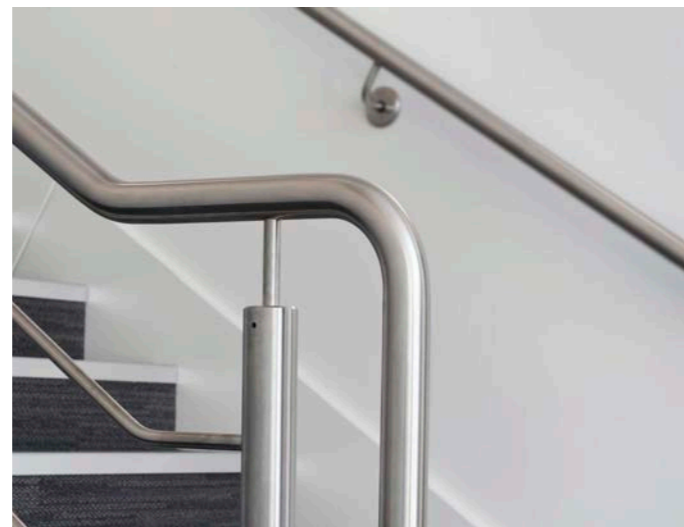
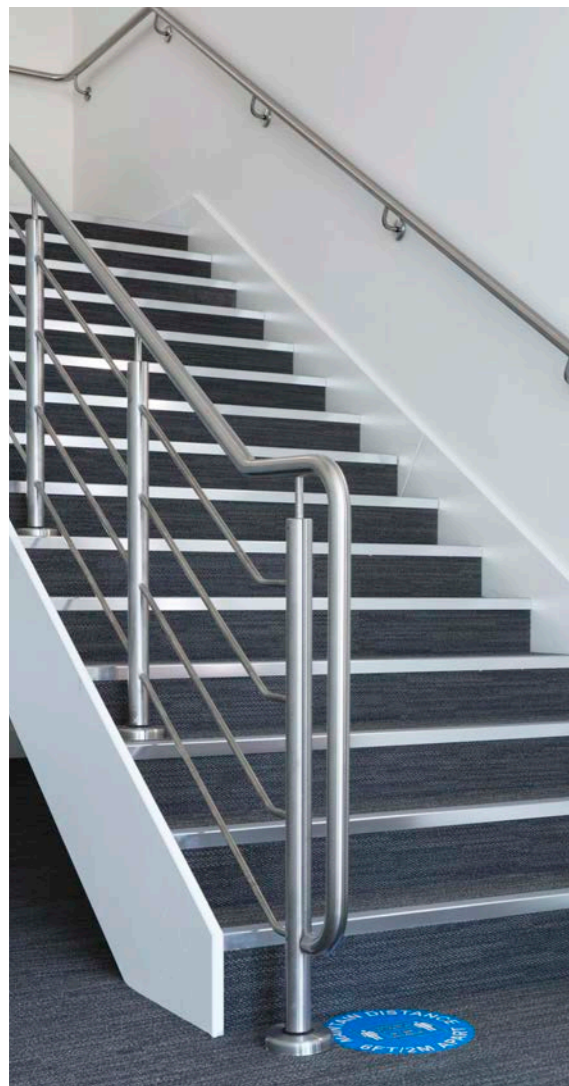
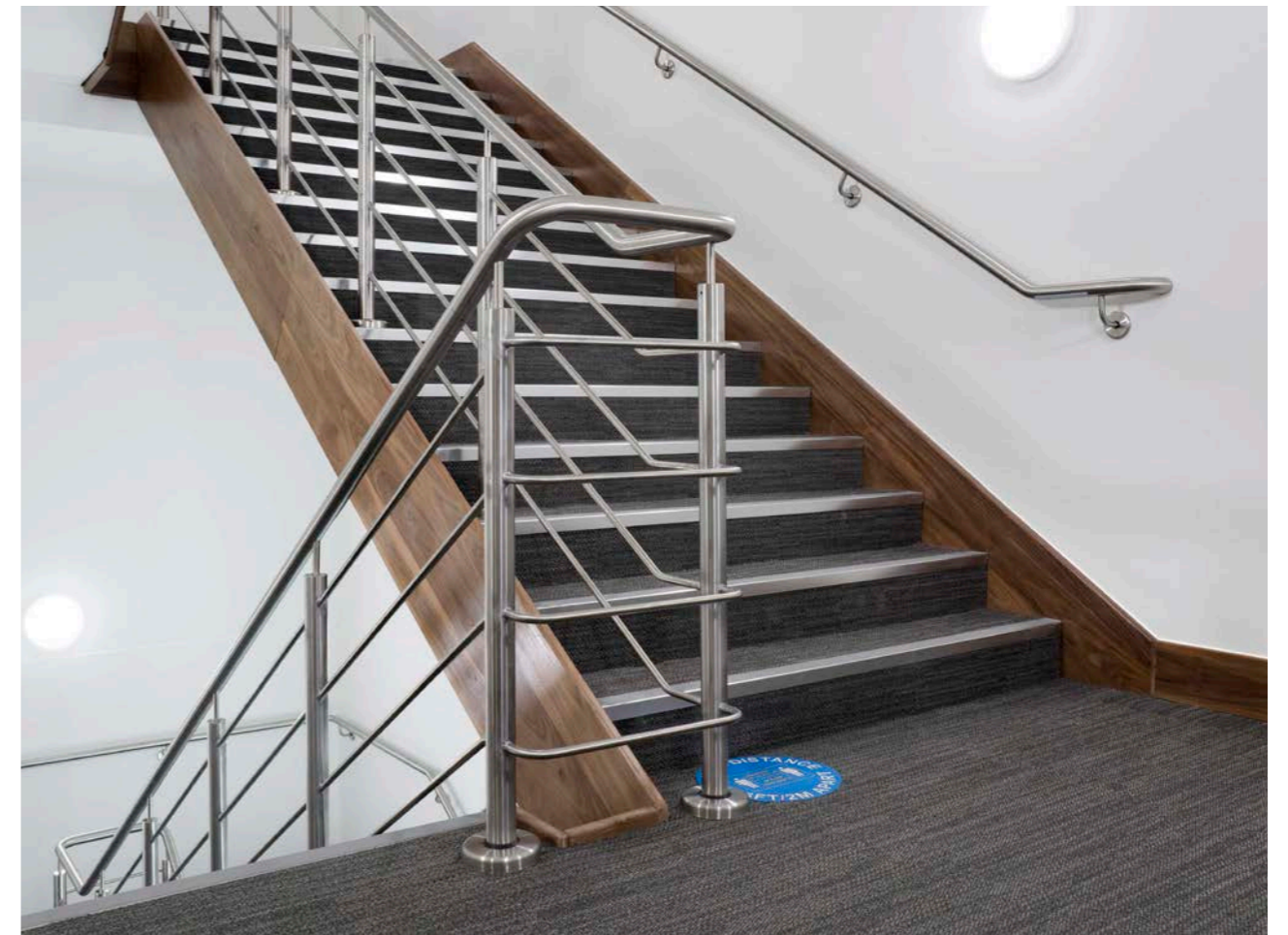
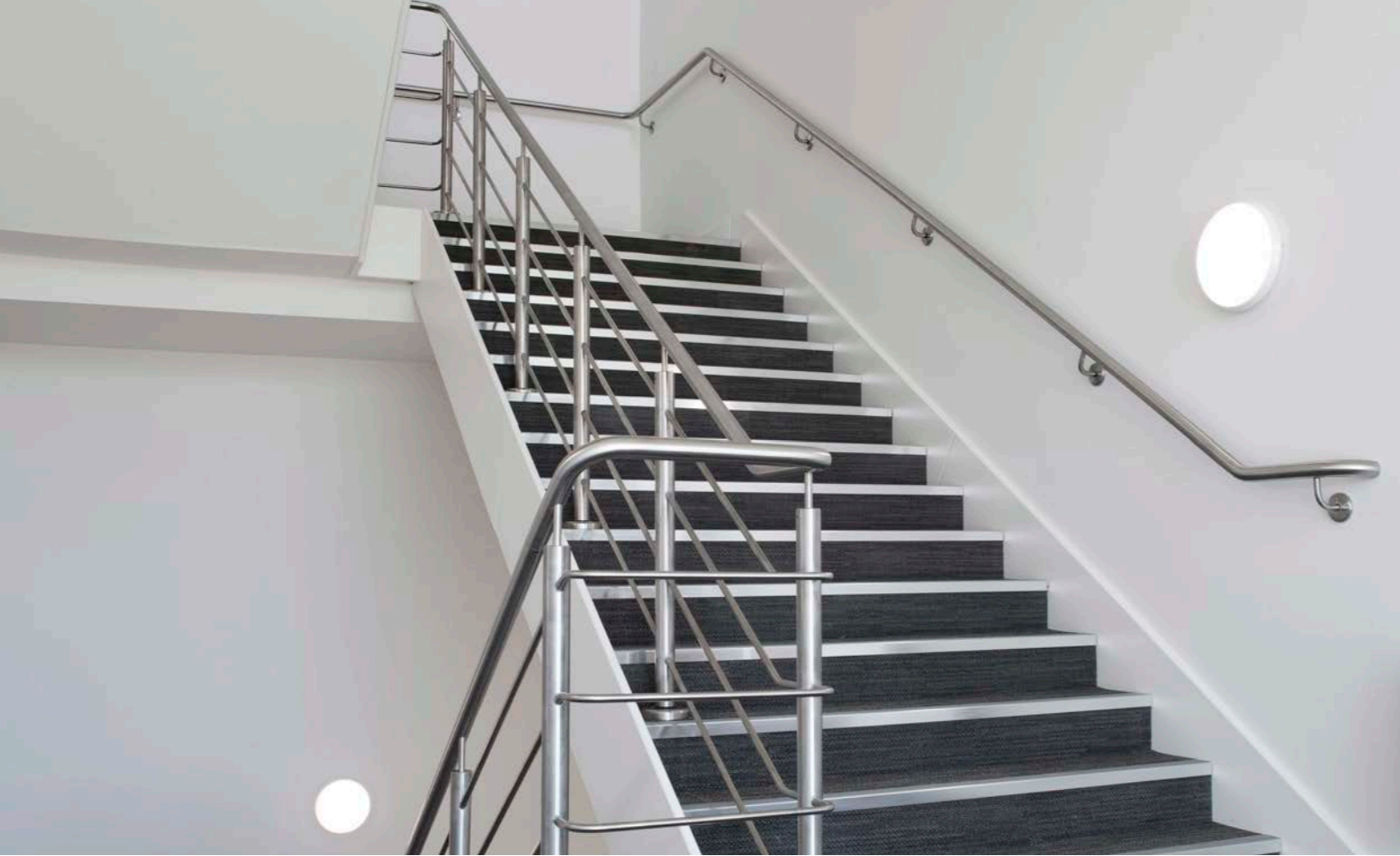


Parkview

Kew Bridge, London

- Client:** Paradigm Land
- Architect:** Whittam Cox Architects
- Contractor:** ARJ Construction
- Project Value:** Circa £404,000
- Design:** Stainless Steel
- Features:**
- 50mm dia. satin polished 316 grade stainless steel balusters and handrail
 - 10mm clear toughened glass infill with 'D' type glass clamps

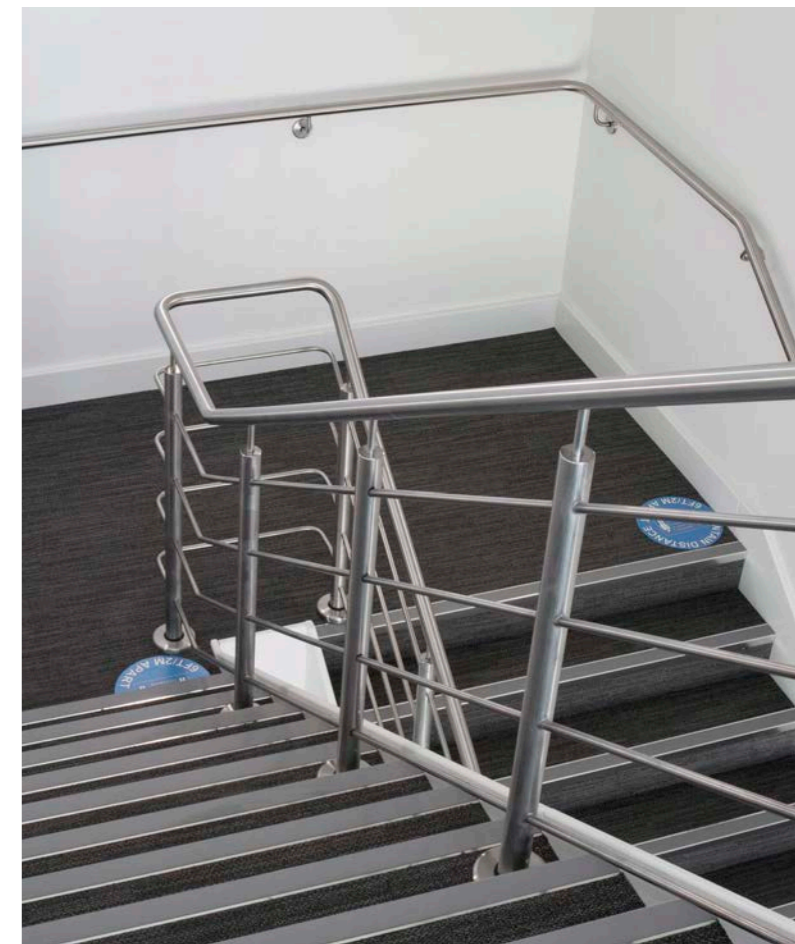




Gulfstream MRO

Farnborough Airport

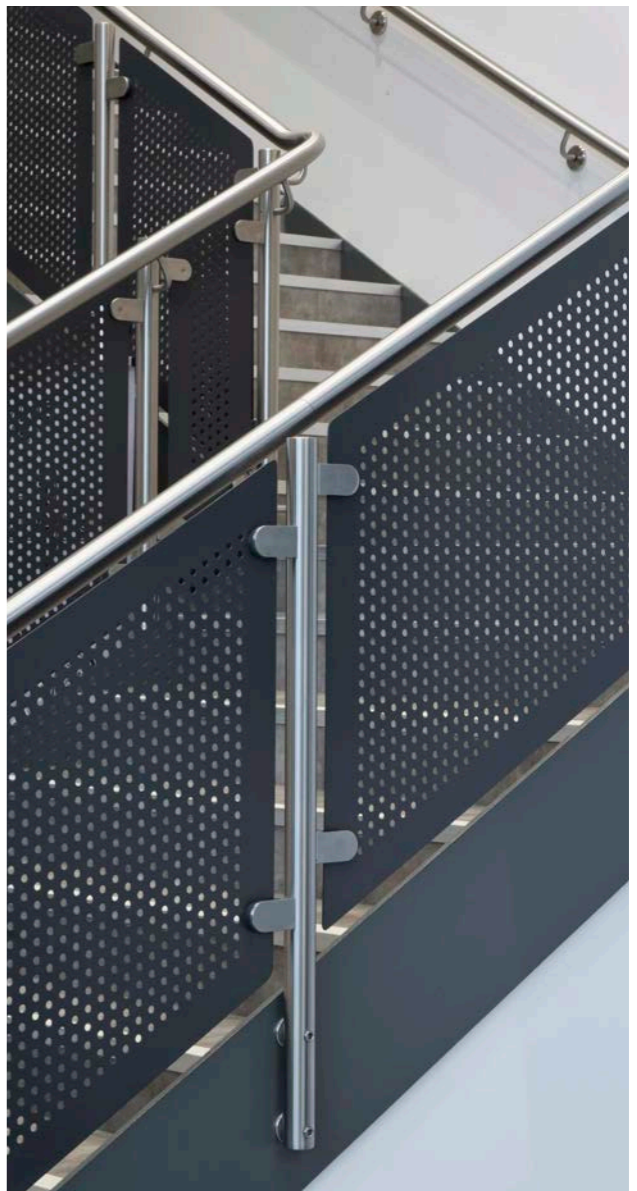
- Client:** Gulfstream Aerospace Corporation
- Architect:** Gebler Tooth Architects
- Contractor:** Volker Fitzpatrick Ltd
- Project Value:** Circa £113,000
- Design:** Stainless Steel
- Features:**
- 50mm dia. satin polished 304 grade stainless steel balusters and handrail
 - 4 No. 16mm dia. stainless steel horizontal bar infill





University of Kent Canterbury

- Contractor:** Jenner (Contractors) Ltd
- Design:** Stainless Steel
- Features:**
- 50mm dia. 304 grade satin polished stainless steel baluster posts and offset handrail
 - Perforated infill panel in a polyester powder coated finish
 - Standard panel specification: 3mm mild steel, 60mm border, 12mm dia. holes at 27mm pitch





Bucklers Lodge Care Home

Crowthorne

Client: Halebourne Care Group Ltd

Architect: ADG Architects

Contractor: Dalton Homes

Project Value: Circa £205,000

Design: Stainless Steel

Specification: RECALA®

- Features:**
- 48mm dia. 316 grade satin polished stainless steel baluster posts and handrail
 - 10mm clear toughened glass infill with 'D' type glass clamps
 - 1800mm high balustrade complete with bespoke base plate and spigot detail for additional rigidity





Century House Horsham

Architect: JKA Development Consultants Ltd

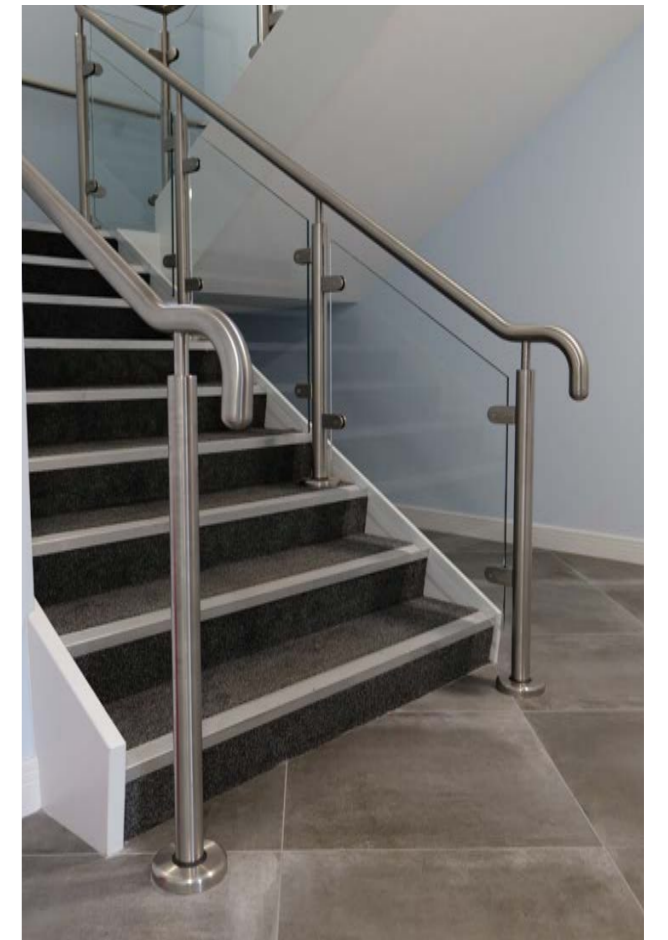
Contractor: Ashgrove Homes

Project Value: Circa £136,000

Design: Stainless Steel

Specification: RECALA®

- Features:**
- 48mm dia. 304 grade satin polished stainless steel baluster posts and handrail
 - 10mm toughened glass infill with 'D' type glass clamps



GROUND 1-9
 FIRST 10-18
 SECOND 19-27
 THIRD 28-36
 FOURTH 37-45
 FIFTH 46-49

Parkway Station

Bristol

Client: Great Western Railway

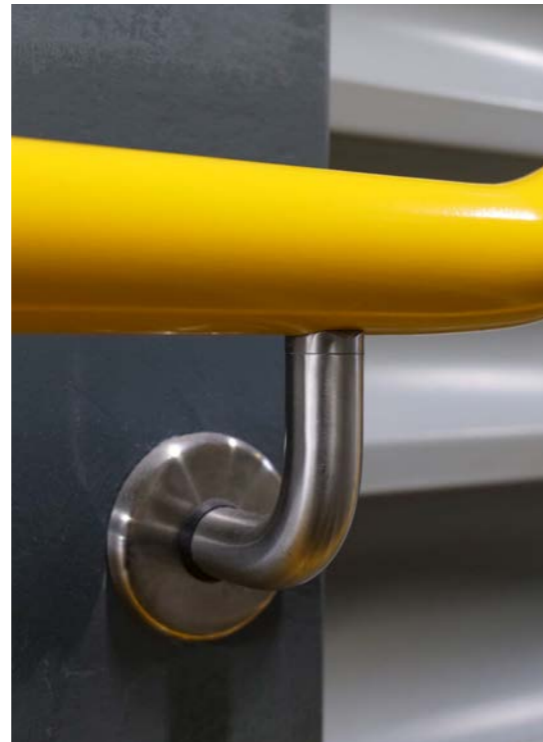
Contractor: Integral

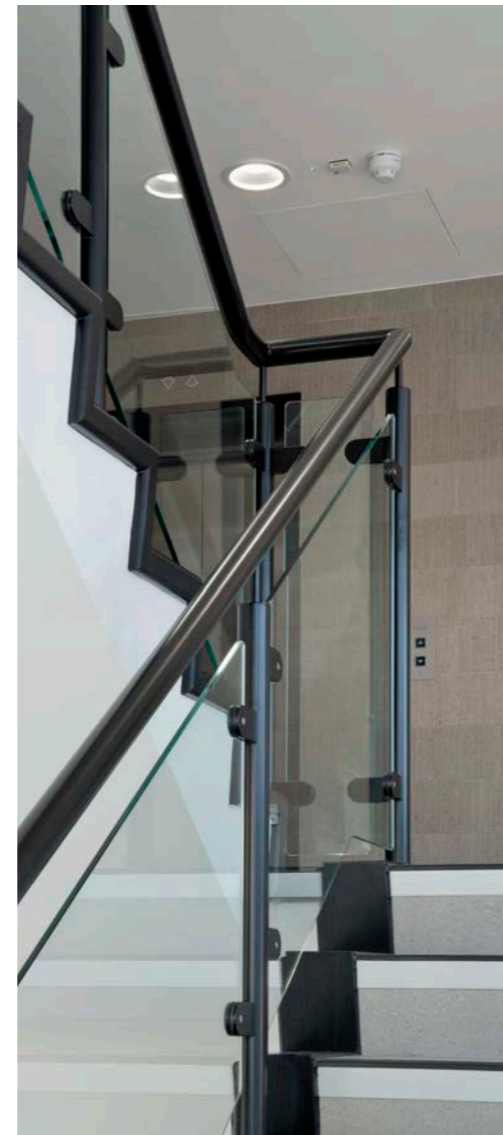
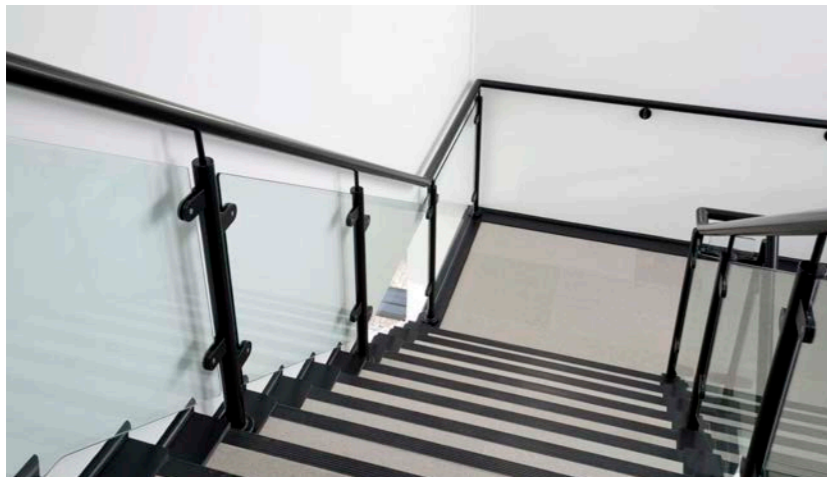
Project Value: Circa £43,000

Design: Coated Finish

Specification: RECALA®

- Features:**
- Replacement of existing handrail to comply to DDA regulation
 - 48mm dia. 304 grade stainless steel handrail with a nylon coated finish to achieve a 'not cold to touch surface' complete with stainless steel wall brackets





Forest Gate

Crawley

Contractor: Morgan Lovell PLC

Design: Coated Finish (Polyester Powder Coated)

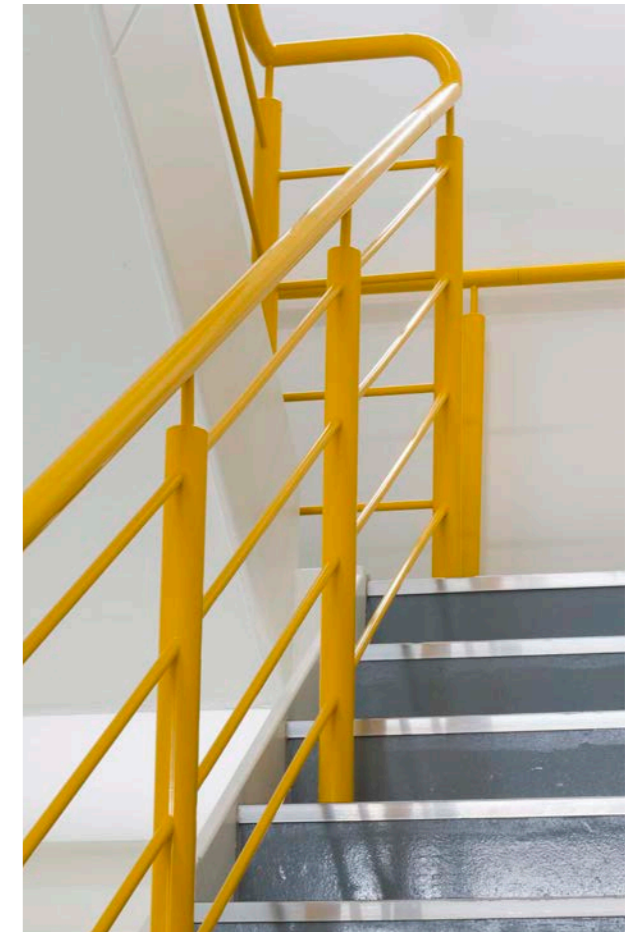
- Features:**
- 48mm dia. mild steel balusters and handrail in a polyester powder coated finish
 - 10mm clear toughened glass with 'D' type glass clamps



Gulfstream MRO

Farnborough Airport

- Contractor:** Volker Fitzpatrick Ltd
- Design:** Coated Finish (Nylon Coated)
- Features:**
- 48mm dia. mild steel balusters and handrail in a nylon coated finish
 - 4 No. 16mm dia. steel horizontal bar infill in a nylon coated finish



 Nylon coated
in Yellow...
RAL 1003



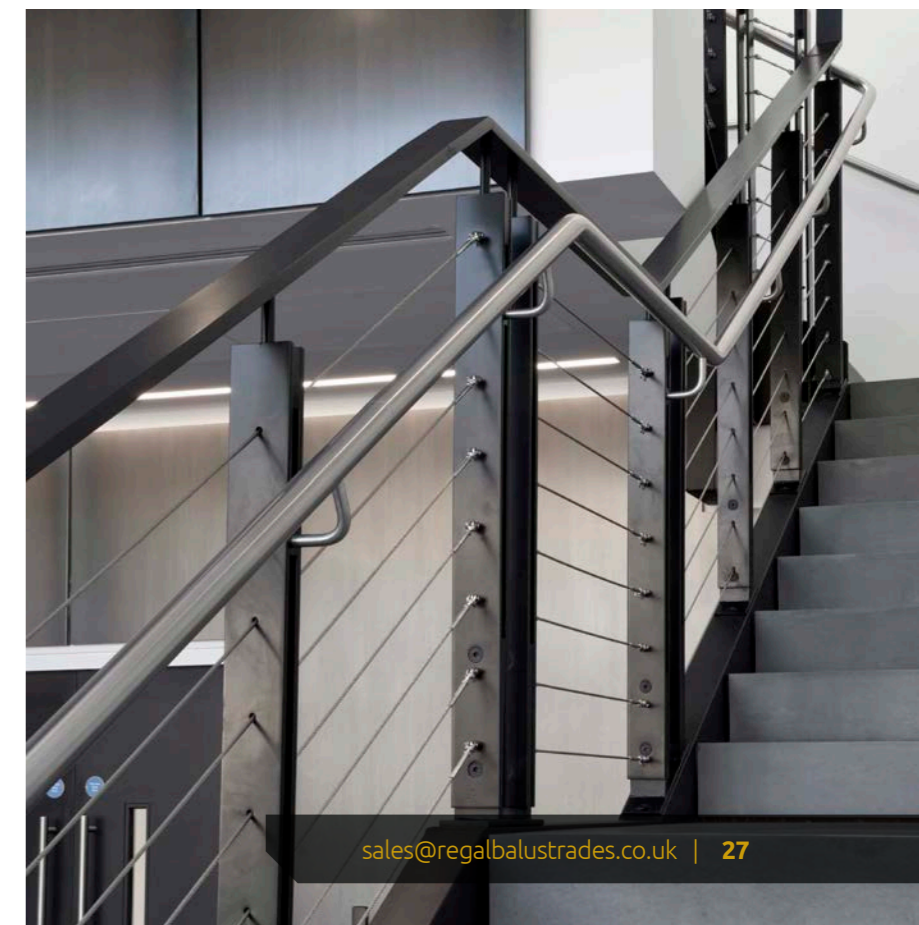
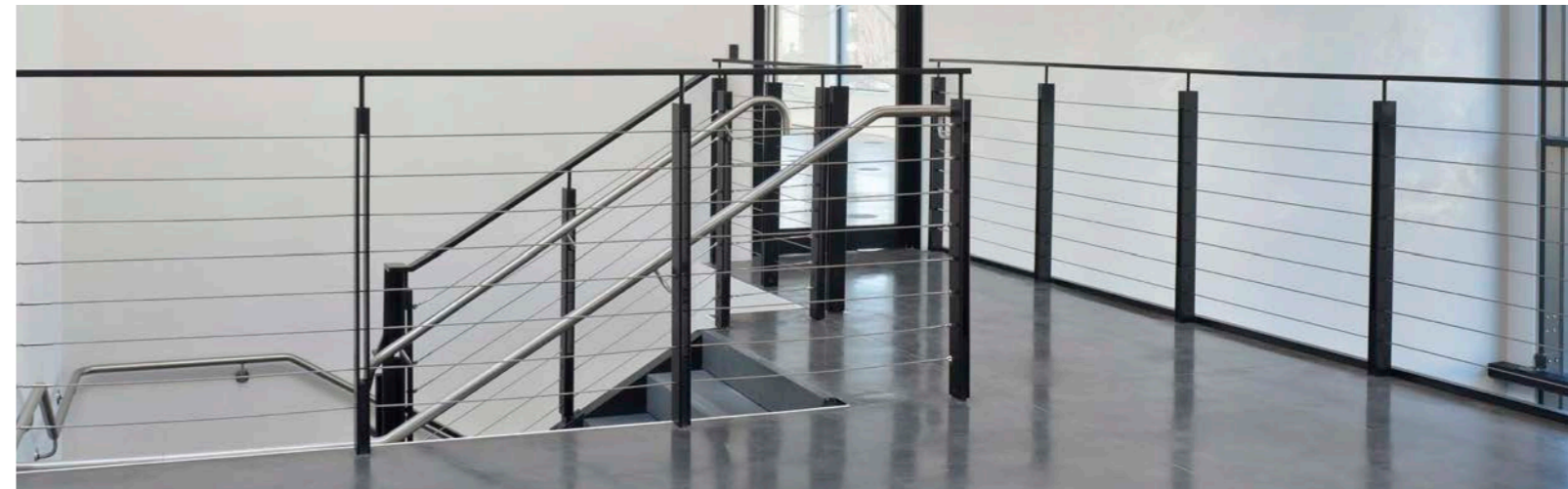
Radio House

Cambridge

Contractor: Quinn London Ltd

Design: Flat Bar Baluster

- Features:**
- Mild steel twin flat balusters complete with flat bar handrail in a polyester powder coated finish
 - 42mm dia. 304 grade satin polished stainless steel handrail
 - 5mm dia. stainless steel wire infill





Essoldo House

Chelsea, London

Architect: Nick Shipp Architects

Contractor: Volker Fitzpatrick Ltd

Project Value: Circa £173,000

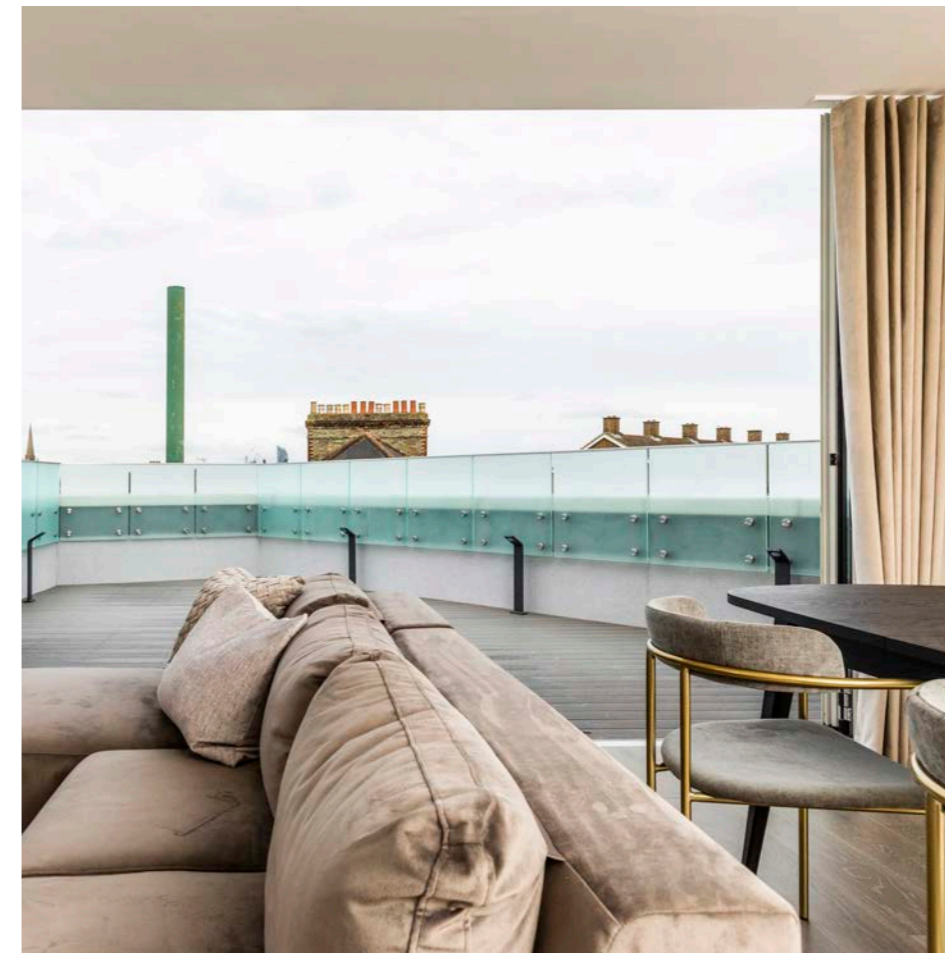
Design: Structural Glass

- Features:**
- 21.5mm clear toughened laminate glass with various fixing solutions to architect's requirements
 - Glass complete with satin polished stainless steel top capping

I would like to take this opportunity to thank you for the fantastic work your operatives carried out on the Essoldo House project. Both the client team and the VolkerFitzpatrick team were very happy with the quality of the work that you provided and the safe manner in which the works were carried out

Sean
Senior Surveyor at Volker
Fitzpatrick Ltd

Some of the images used have been kindly provided by Valley Provincial (www.valleyprovincial.com)



Dawes Road

Fulham, London

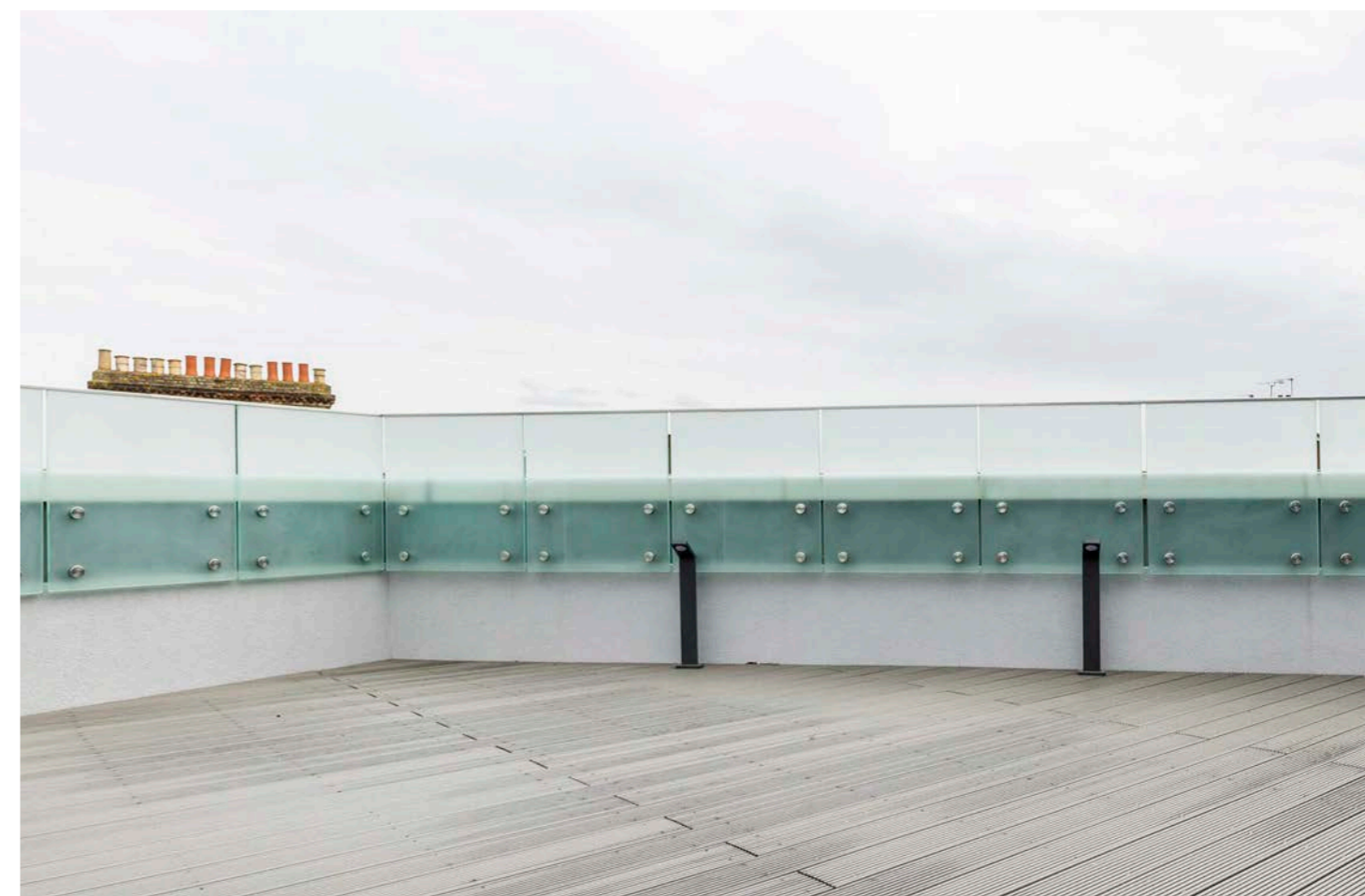
Client & Contractor: G M Developments

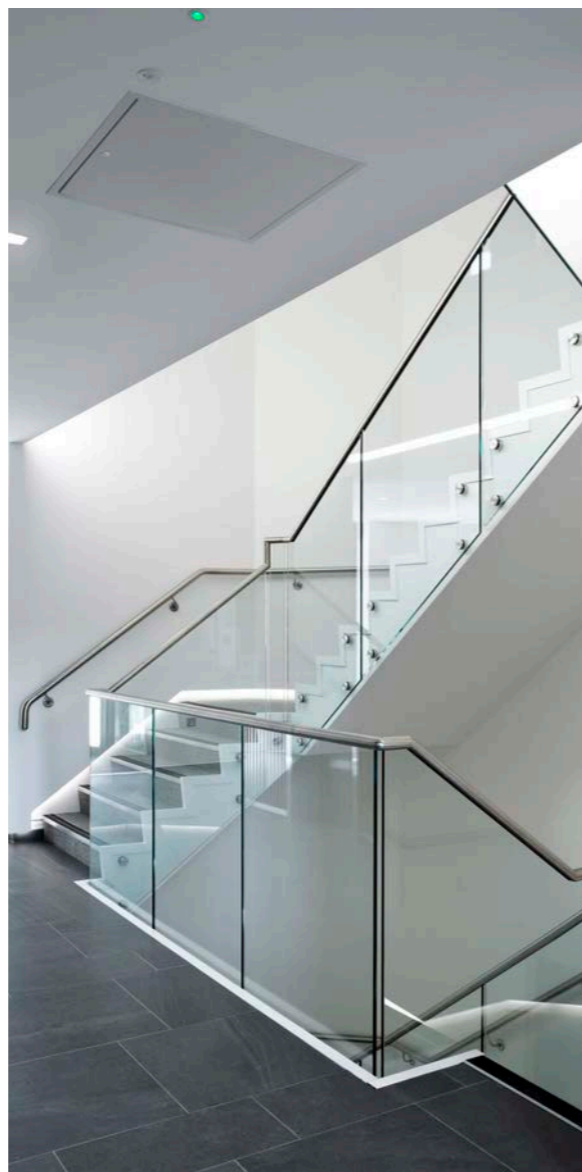
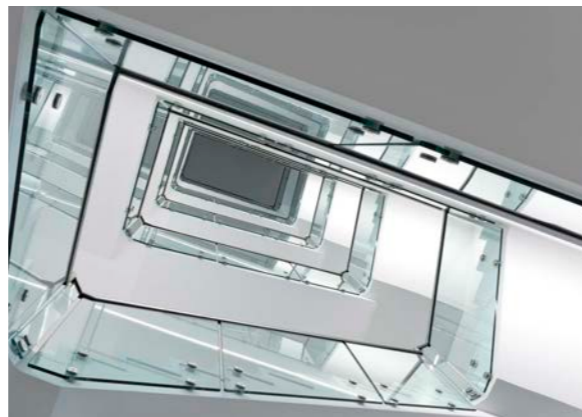
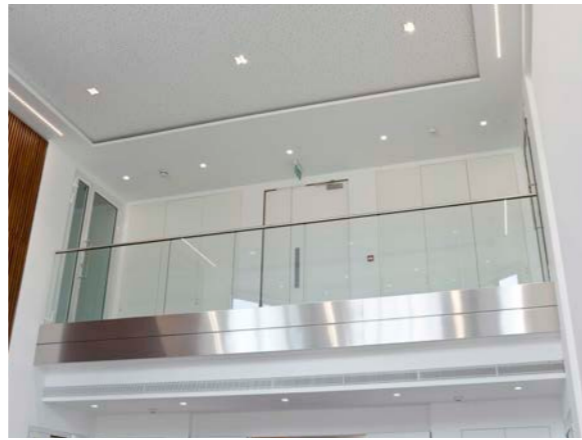
Architect: 3W

Project Value: Circa £19,000

Design: Structural Glass

- Features:**
- 21.5mm laminate glass with opaque finish one side complete with small decorative stainless steel capping
 - 50mm dia. satin polished stainless steel point fixed glazing detail





Commercial Offices

Reading

Contractor: Morgan Lovell PLC

Design: Structural Glass

- Features:**
- 15mm clear toughened glass with 50mm dia. satin polished stainless steel point fixed glazing detail
 - 48mm dia. slotted satin polished stainless steel handrail

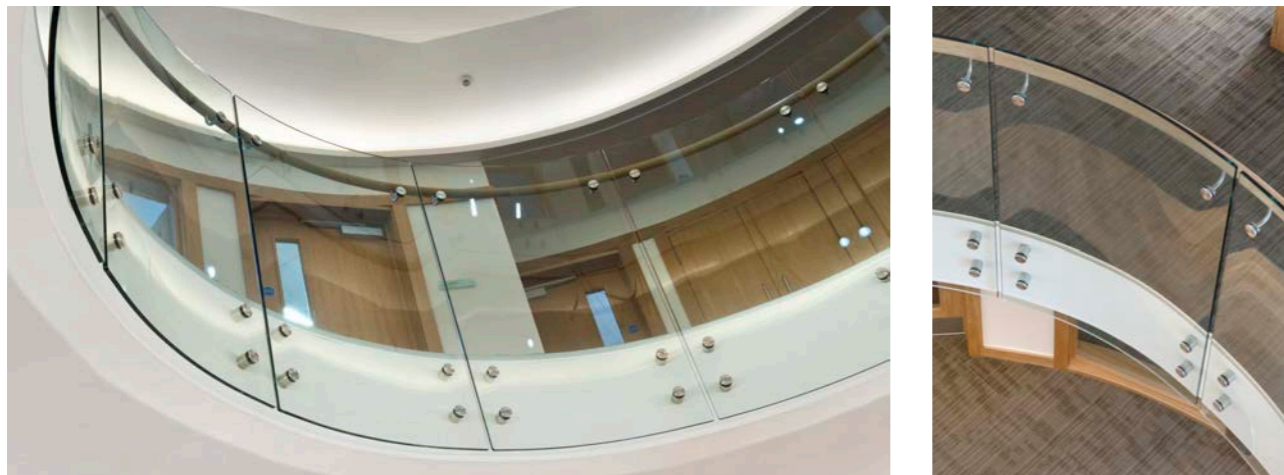
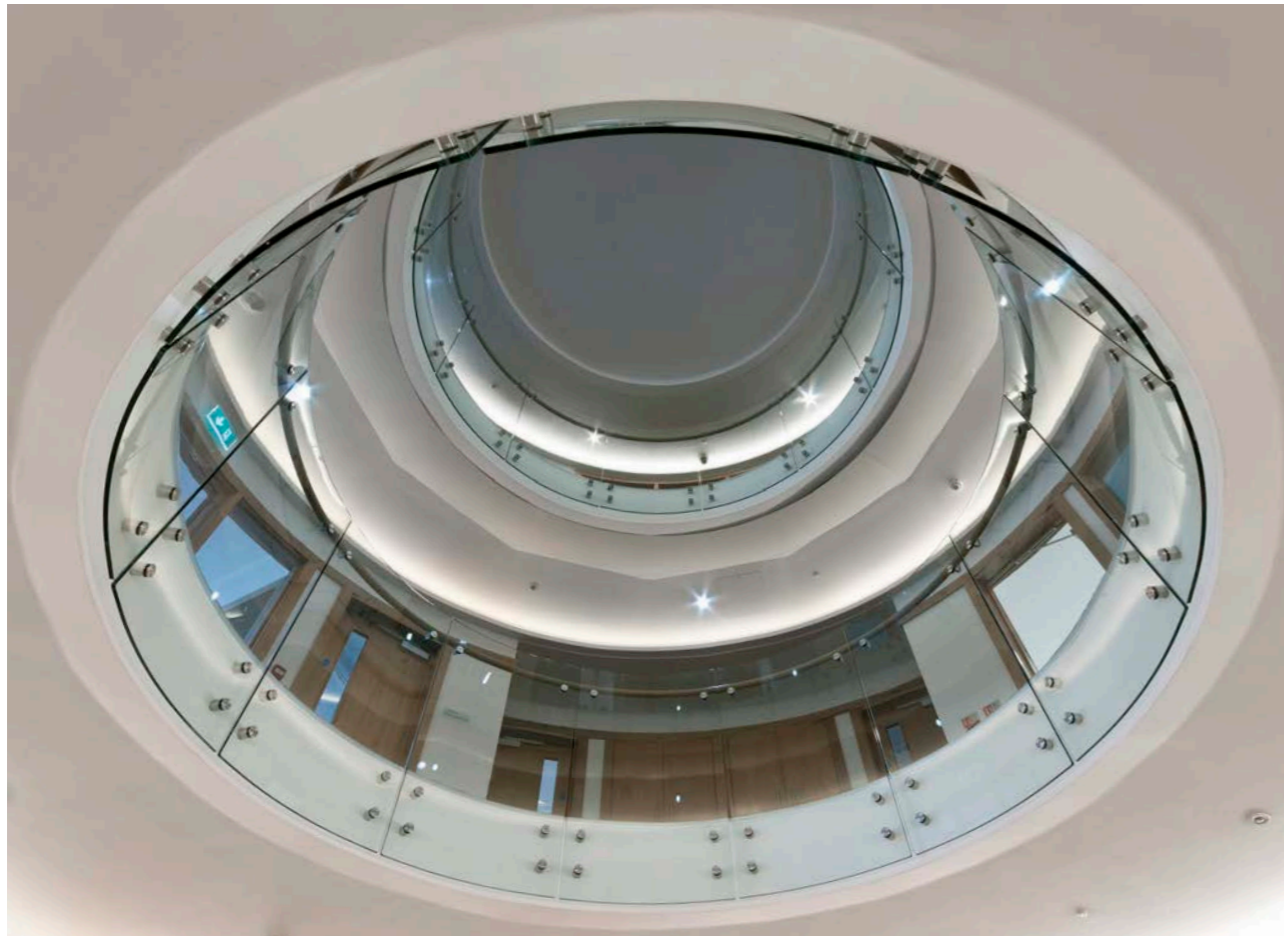


New Broad Street London

Contractor: Faithdean PLC

Design: Structural Glass

- Features:**
- 15mm clear toughened structural glass with concealed base fixing channel
 - Flat bar satin polished 304 grade stainless steel offset handrail



Woolf Institute Cambridge

Contractor: Hutton Construction

Design: Structural Glass

- Features:**
- 15mm clear toughened curved structural glass with 50mm dia. satin polished stainless steel point fixed glazing detail
 - 50mm dia. hardwood offset curved handrail in a clear lacquer finish complete with satin polished stainless steel



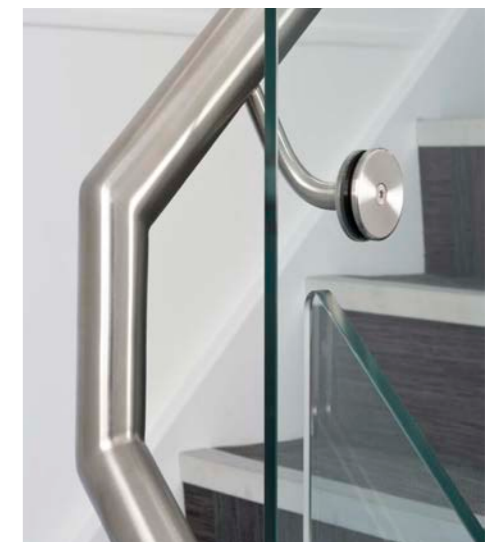


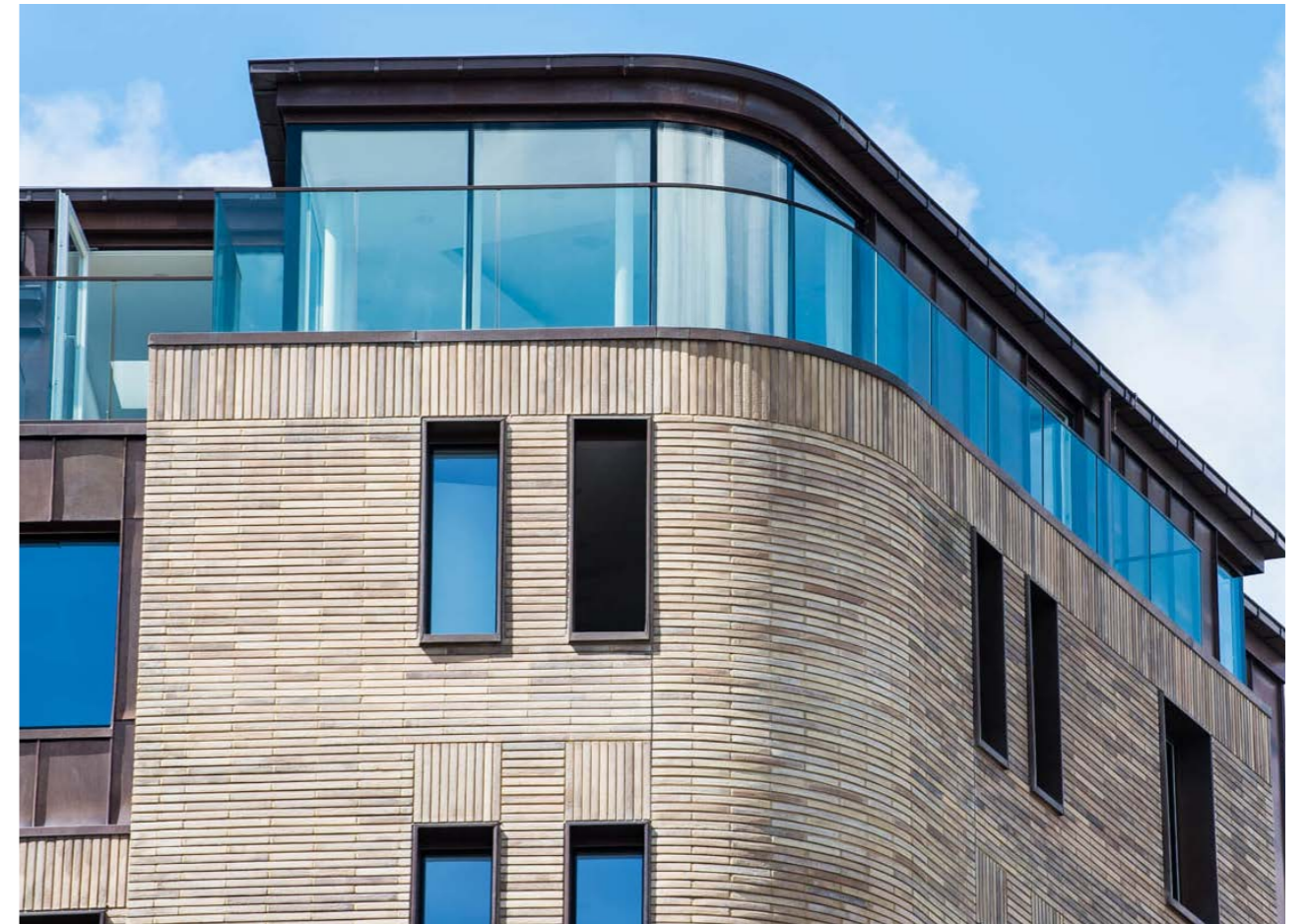
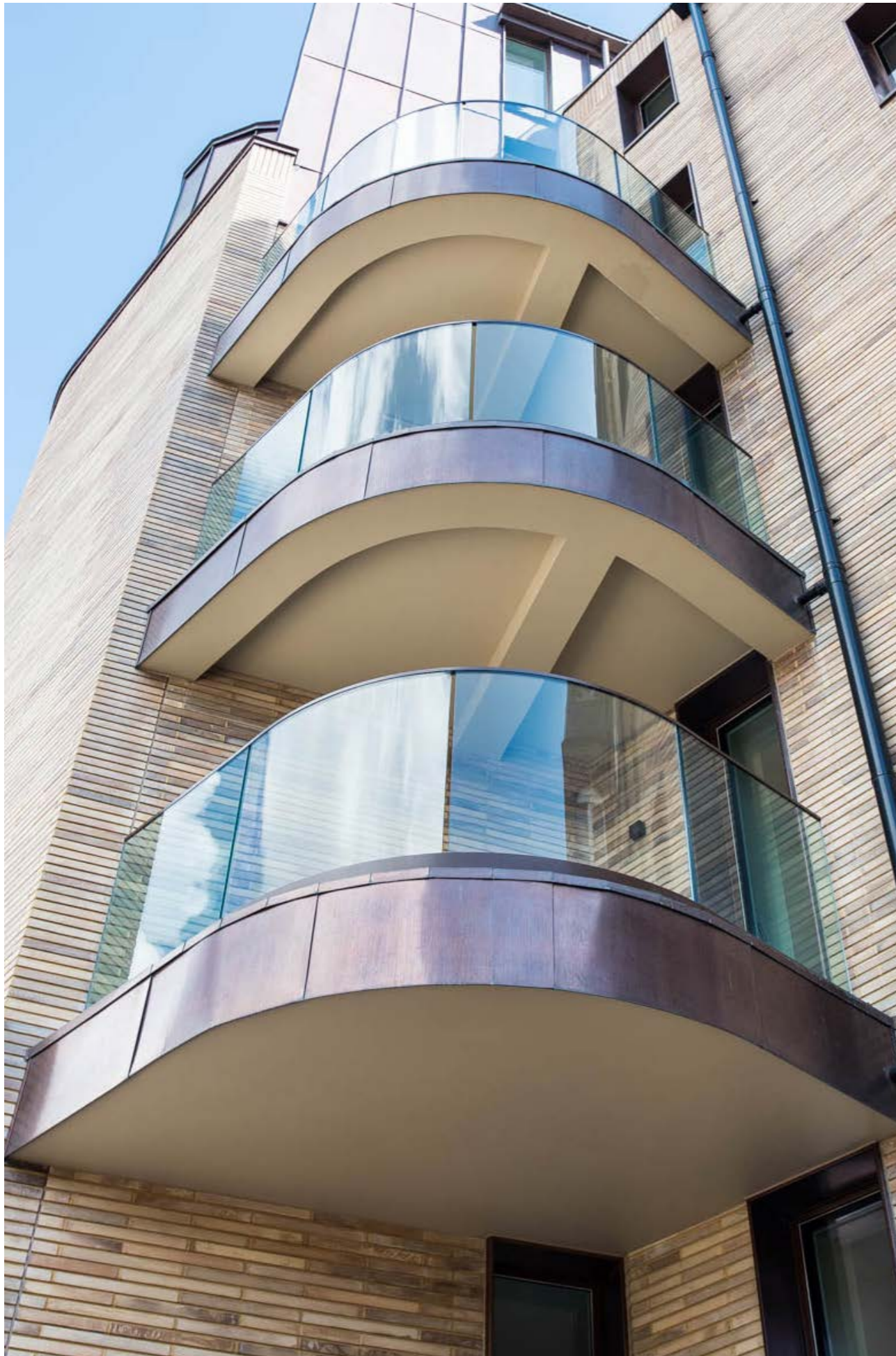
Meridian House

Slough

Design: Structural Glass

- Features:**
- 15mm clear toughened structural glass fixed with mild steel continuous clamping plate in a PPC finish
 - 50mm dia. 304 grade satin polished stainless steel offset handrail fixed through glass





Harrington Road

London

Contractor: Hutton Construction

Design: Structural Glass

- Features:**
- 21.5mm clear toughened laminate structural glass featuring curved panels to suit balcony radius
 - Stainless steel top capping in a polyester powder coated finish



Stanbrook Abbey

Worcester

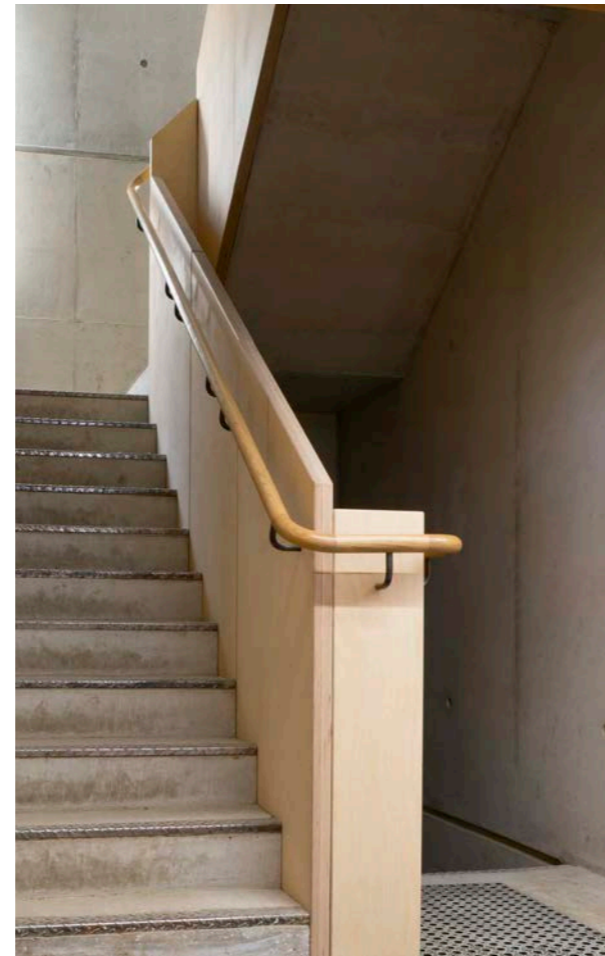
Design:

Structural Glass

Features:

- 25.5mm clear toughened and laminated structural glass with a SGP interlayer
- Concealed aluminium base fixing channel
- Small section top capping in 316 grade satin polished stainless steel





Weston Street London

Contractor: Bryen & Langley Ltd

Design: Hardwood Handrail

- Features:**
- Offset 42mm dia. hardwood handrail in a clear lacquer finish
 - Custom bronze metal antique (BMA) handrail brackets

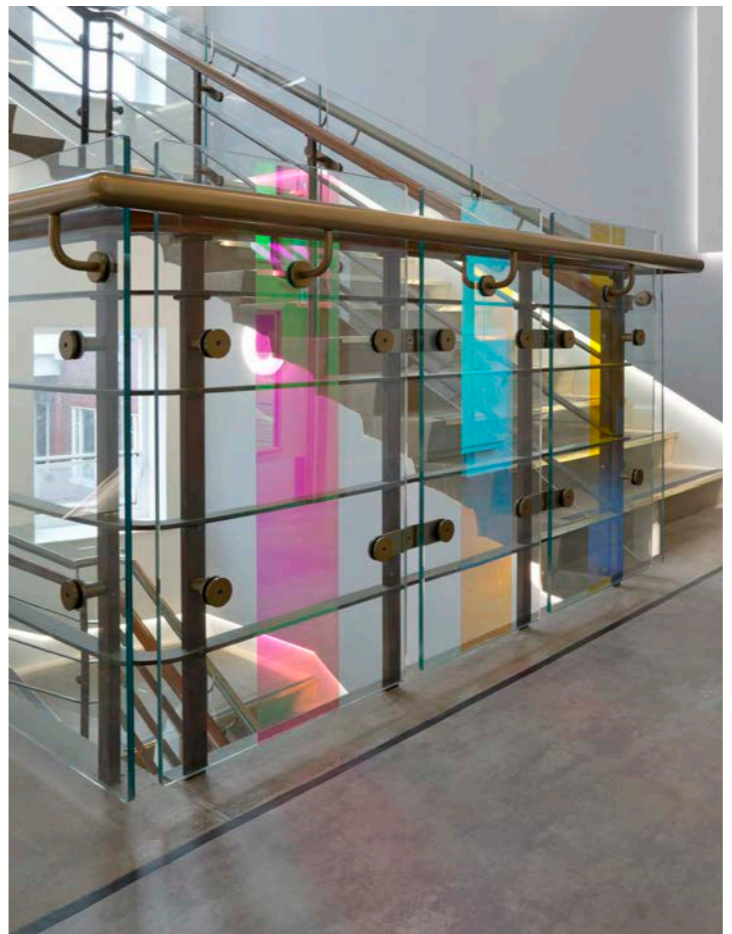
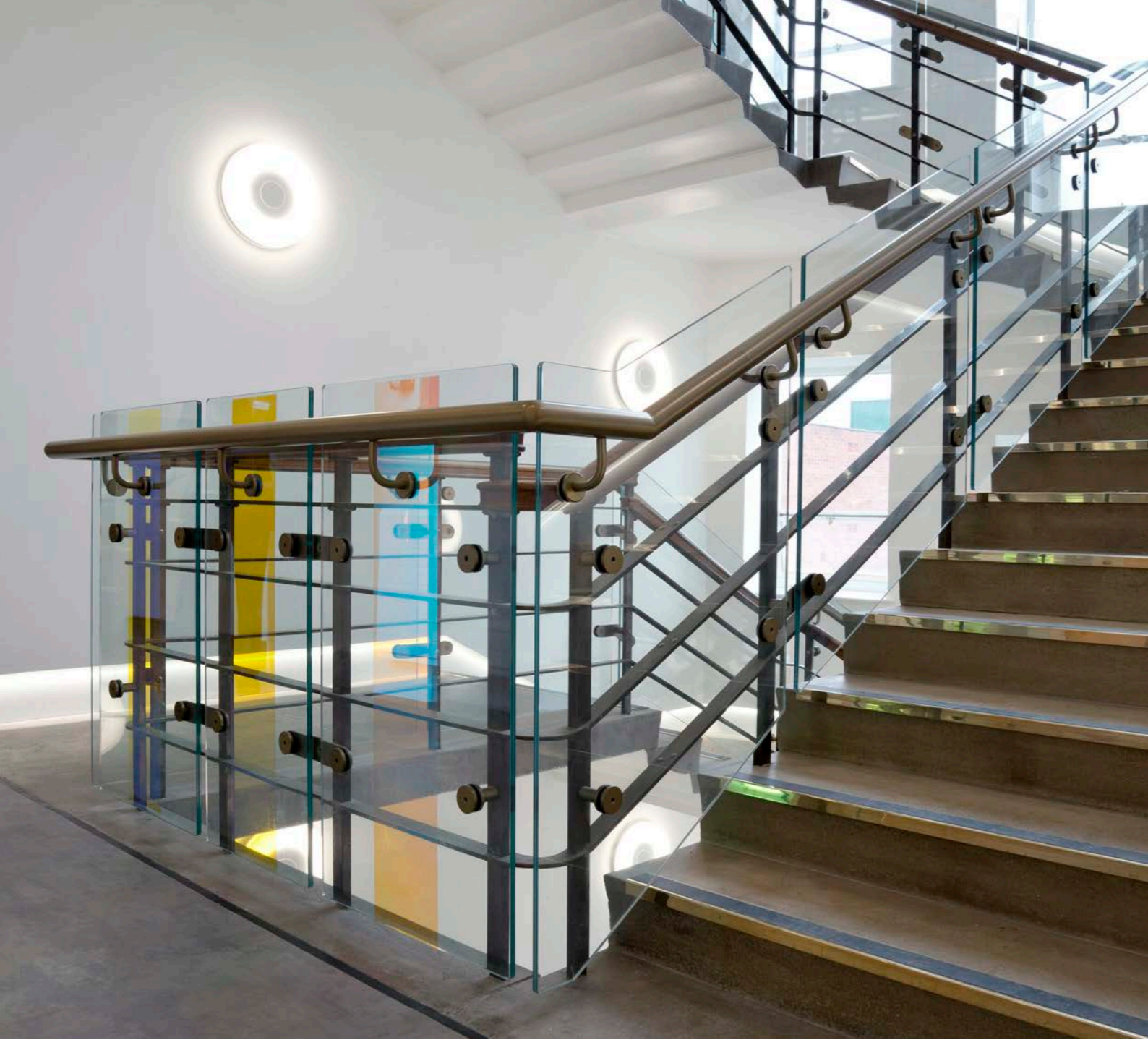
- Additional Feature:**
- 50mm thick birch plywood balustrade panels in a clear lacquer finish



Claremont Fan Court School Esher

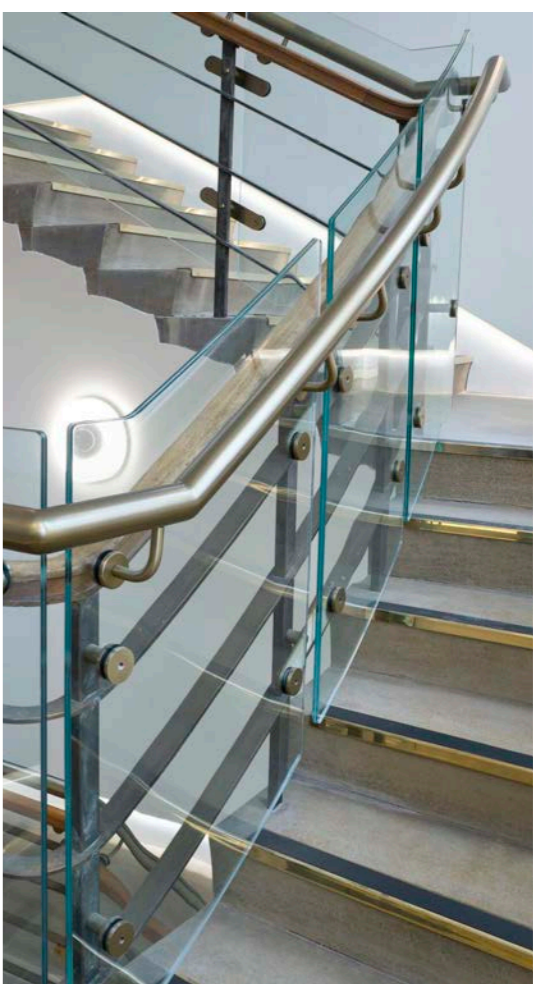
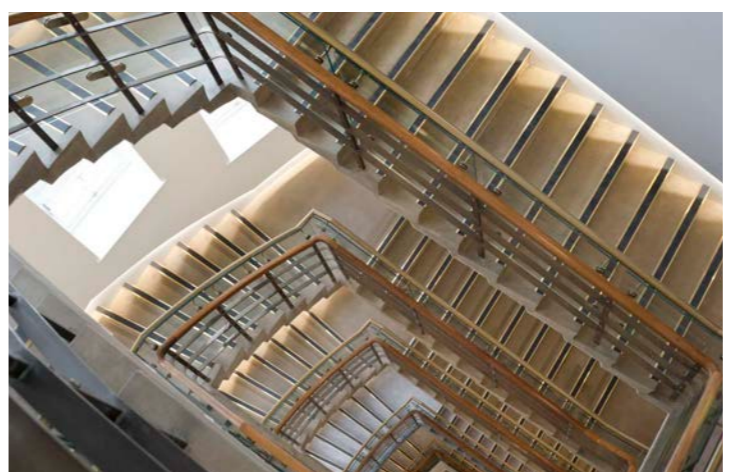
- Client:** Claremont Fan Court School
- Architect:** Fletcher Crane Architects
- Design:** Architectural
- Features:**
- Aluminium vertical fins and top handrail to achieve 1.5kN loading complete with offset handrail in a bronze colour polyester powder coated finish
 - Various fixing solutions designed to achieve architects visions
 - Custom designed handrail to incorporate LED lighting





? What is Dichroic Glass?

Dichroic Glass is a multi-layer coating placed on glass by specialist manufacturers. Quartz crystal and metal oxides are vaporized with an electron beam gun in an airless vacuum chamber and the vapor then floats upward and condenses on the surface of the glass in the form of a crystal structure. Each piece of dichroic glass has at least three colours: the colour that reflects from the glass, the colour of the glass, and a second refracted colour that can be seen at a 45 degree angle.

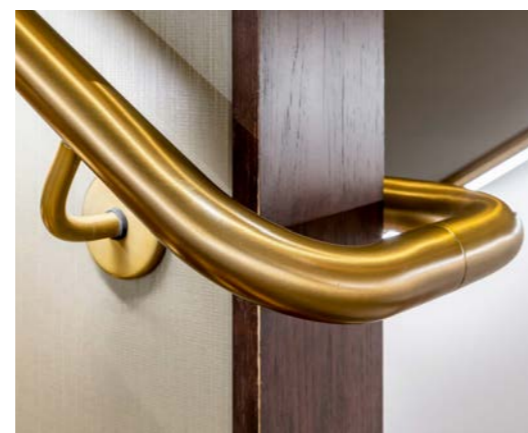
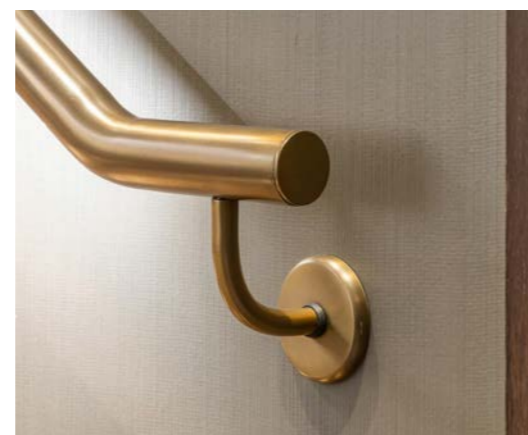
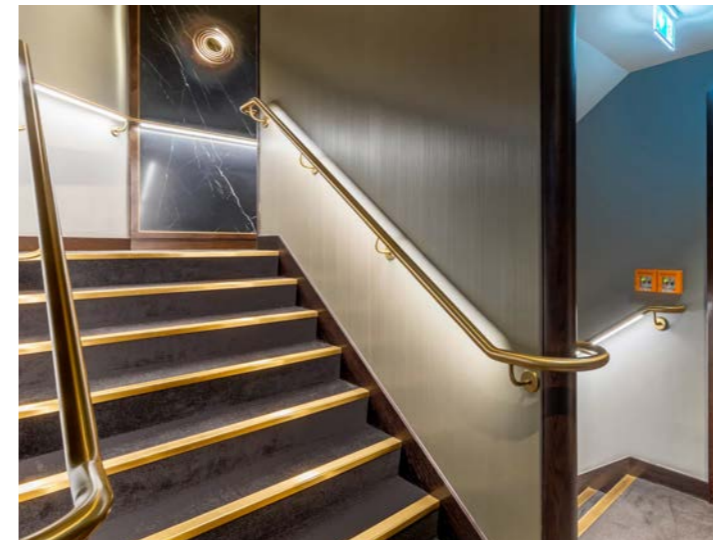


University Dental Hospital Manchester

Contractor: Novus Property Solutions Ltd

Design: Architectural

- Features:**
- Retro installation of laminate glass to bring existing balustrade up to building regulations complete with bespoke brackets to suit
 - Custom handrails to follow existing balustrade in a bronze colour polyester powder coated finish
 - Landing glass panels enhanced with strip of Dichroic film for added colour (Dichroic film applied by architects recommended supplier)



Guardsman Hotel

London

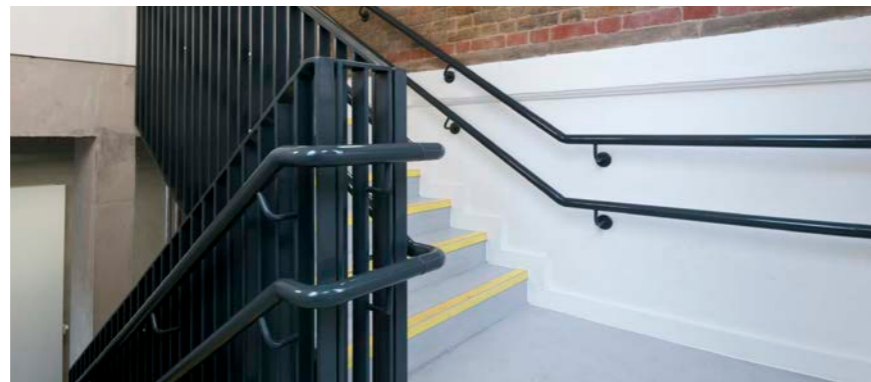
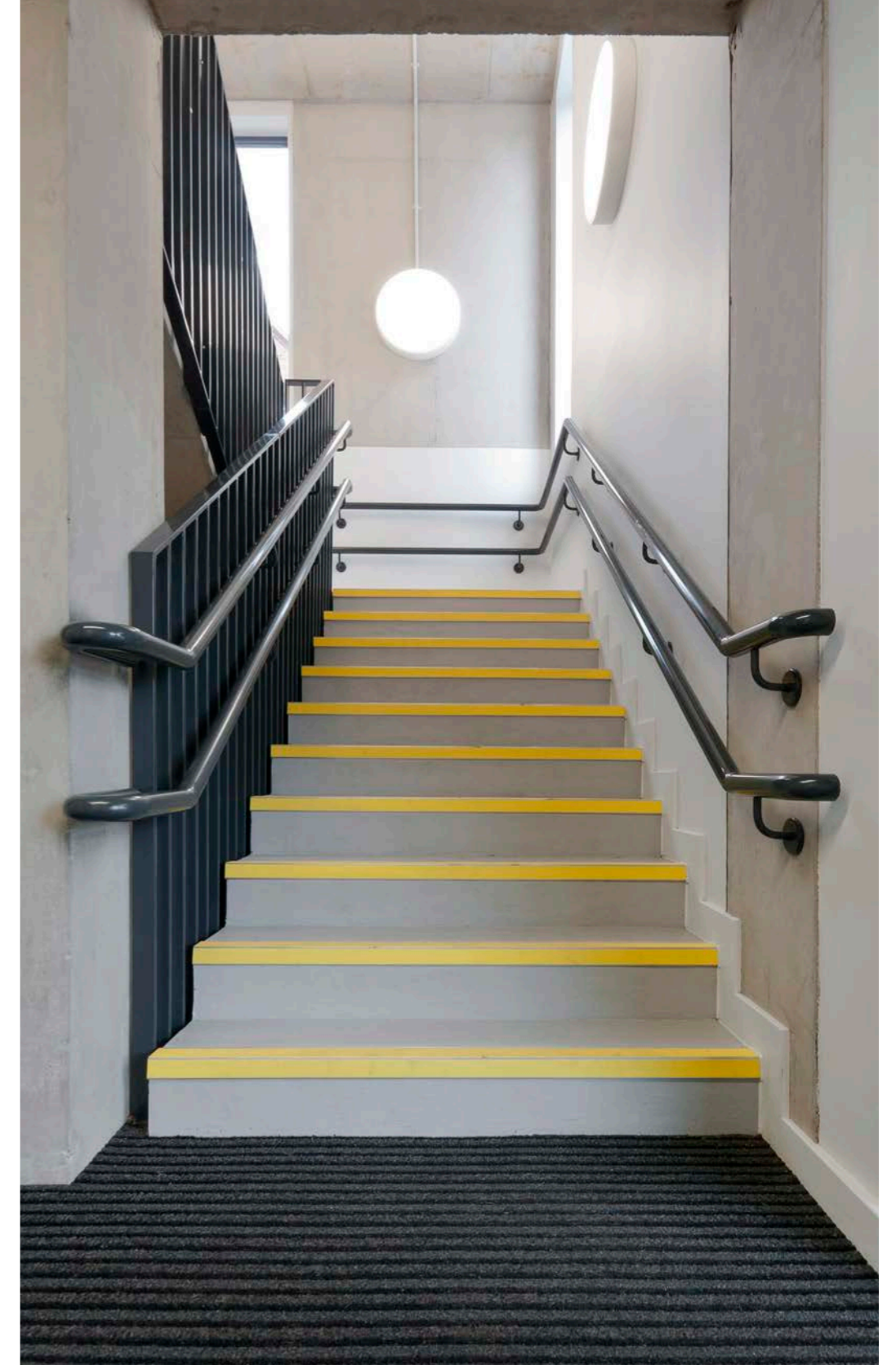
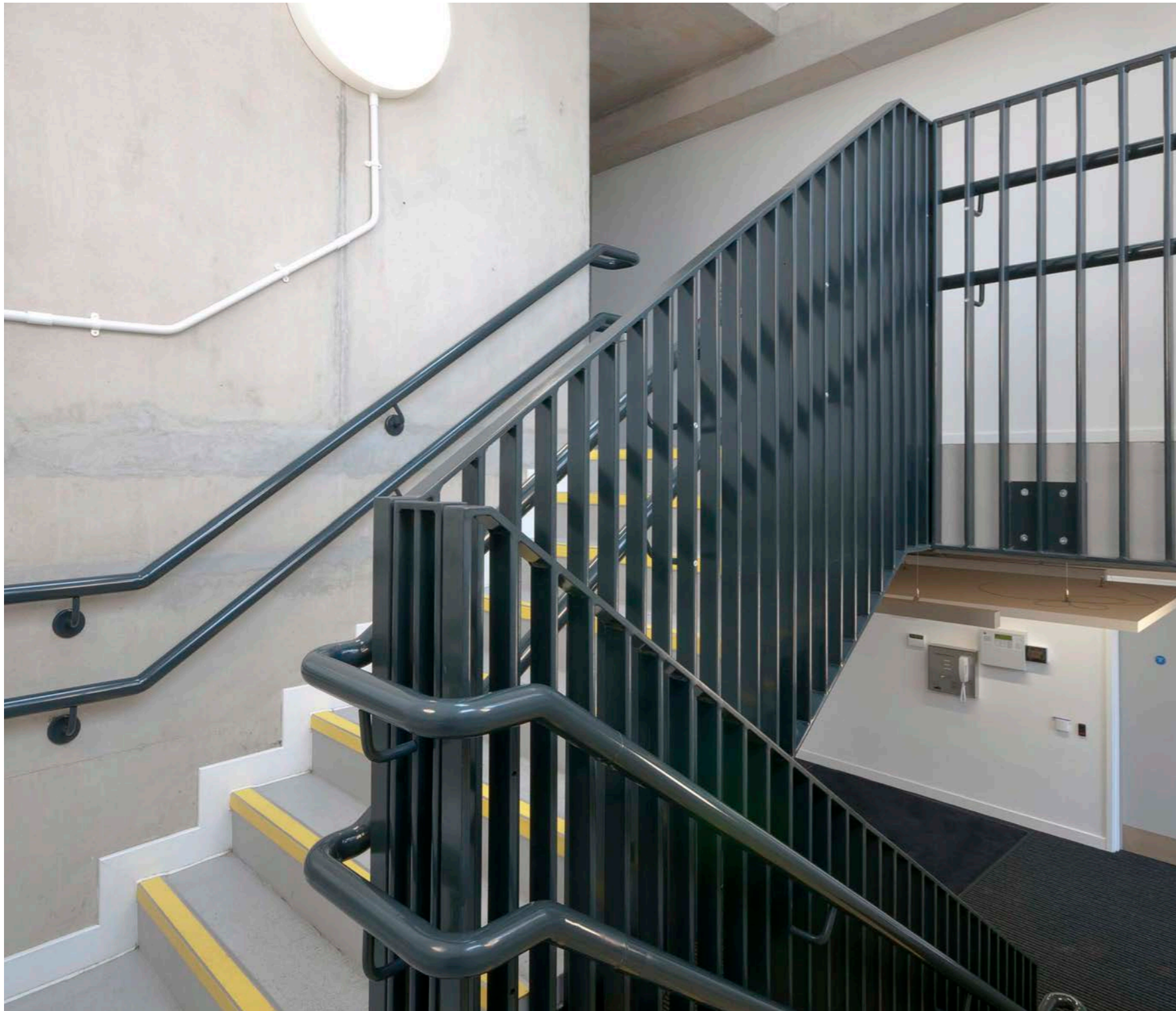
Architect: Dexter Moren Architects

Contractor: Henry Construction

Design: Architectural

Features:

- Customised handrail solution to incorporate LED lighting strip (LED lighting by others)
- 48mm dia. 304 grade satin polished stainless steel handrail complete with bespoke brackets and roll bend wreaths
- Handrail coated in a specialist brass effect powder coating allowing the satin polish to come through the coating to replicate a brushed brass finish



Dundonald School

London

Design:

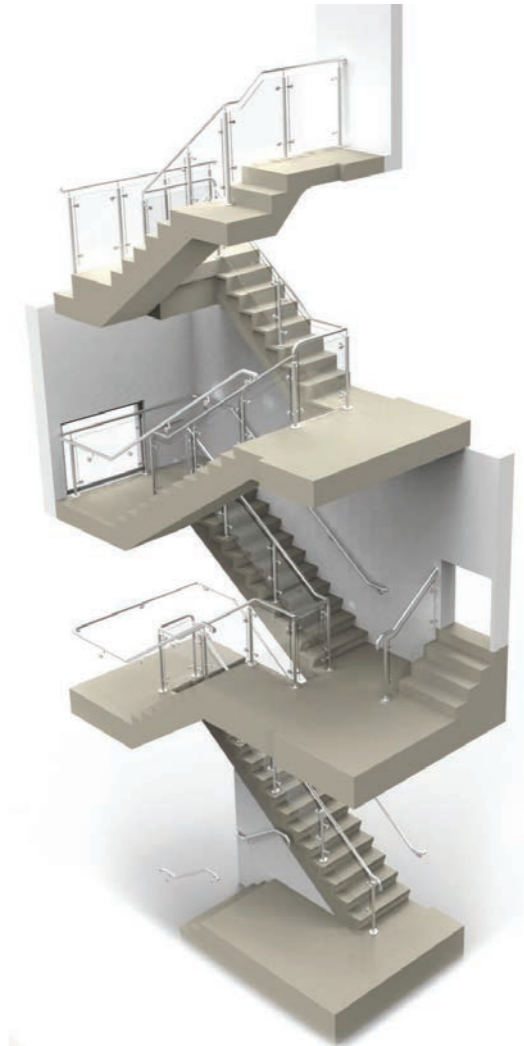
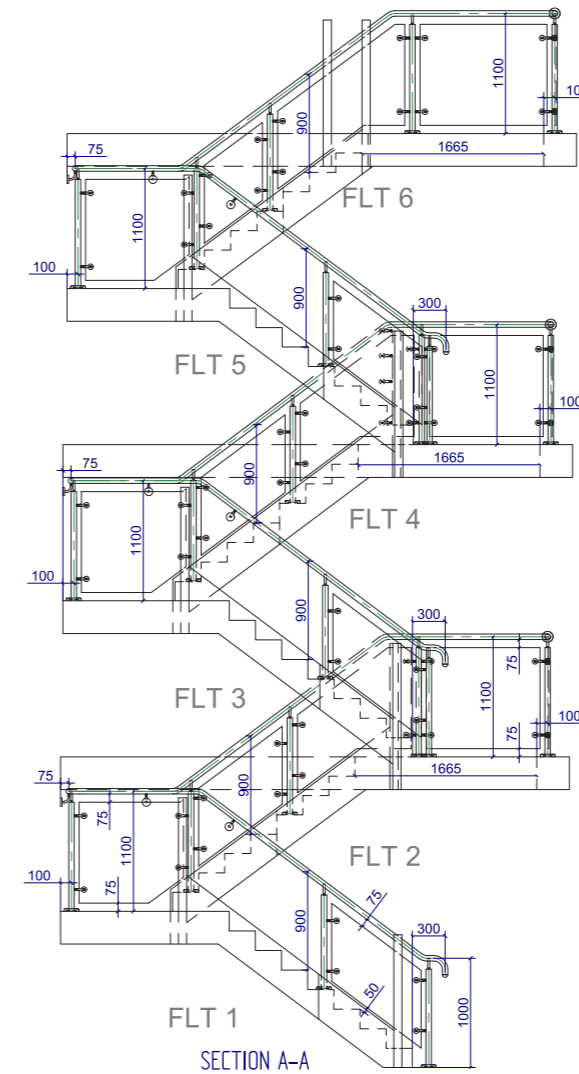
Architectural

Features:

- Mild steel vertical flat bar panels in polyester powder coated finish
- 48mm dia. mild steel offset double handrail in polyester powder coated finish

Our Services

Working closely with architects, designers and building professionals, Regal Balustrades offers assistance at every step of the way, working on the principle of “concept to completion”. This level of service and support sets Regal Balustrades apart, offering something unique in the sector, and makes a real difference to our clients.



At Regal Balustrades we offer the complete package. Working with you from the initial design stage all the way through to manufacturing, installation and aftercare.

With over 23 years of dedication and commitment to our mission statement, quality is assured through our attention to detail.

Our nationwide comprehensive service includes:

- 3D concept visual designs
- Detailed site surveys
- CAD drawings
- Manufacturing
- Installation by our approved site teams



Concept to completion... ..one service



REGAL

BALUSTRADES

Modular Safety Systems Ltd

100 - 200 The Quadrant, Ash Ridge Road,
Bradley Stoke, Bristol, BS32 4QA

T: 0117 935 3888

E: sales@regalbalustrades.co.uk

W: www.regalbalustrades.co.uk

A MODSAFE BRAND