



Model 6040 | 6041

1.0KN TOP AND SIDE MOUNT

- | Quick and simple mounting
- | Different finishes
- | For glass thicknesses between 21.52 - 31.52 mm
- | Drainage holes
- | Increased stability with the same looks
- | Private, commercial and public areas

regal

BALUSTRADES

ONLEVEL distributed by:

TL-6040

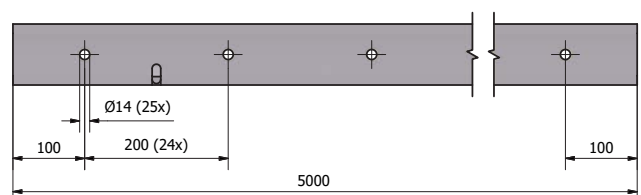
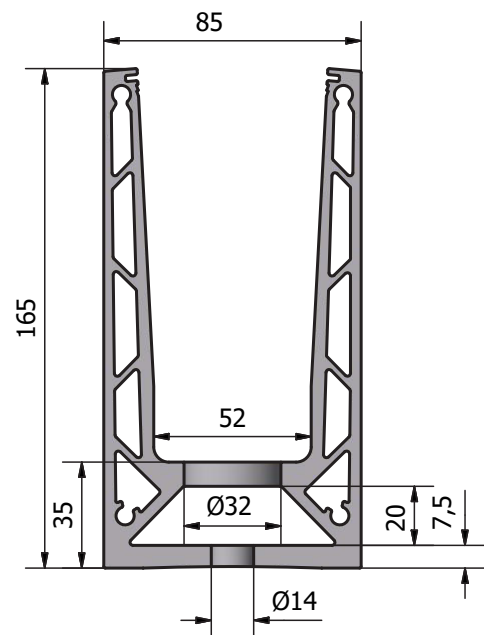
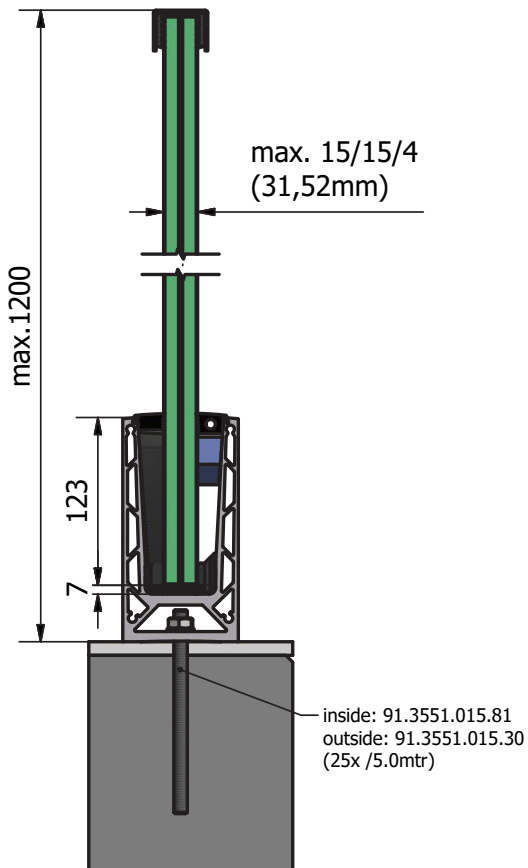
1.0 kN Top Mount

Eat this

The U Profile HD TL-6040 is a good bloke. Now you don't only save installation time but can start your BBQ even earlier. Thanks to the use of anchor bolts, you save cash when compared to the standard countersunk head anchors. In addition, this greatly increases the adjustment facilities when mounting the profile.

Essential Features

- | Slimline, elegant design and low-maintenance
- | **ONLEVEL** FLEXFIT Glass Adjustment Tool
- | Drainage holes
- | Extension pin holes
- | For glass thicknesses between 21.52 - 31.52 mm
- | For applications in the public area





Unlimited
application versatility

Fat but still
nearly invisible



Especially for applications
in the public area



Top mount

TL-6040 | 1.0 KN TOP MOUNT

Glass profile



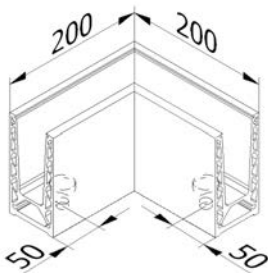
- | Height 140 mm
- | Width 70 mm
- | Sales unit: 1 piece

Model 6040	Mill finish	Plain aluminium	RAL coloured
Length	Art. no.	Art. no.	Art. no.
5000	10.6040.005.10	10.6040.005.11	10.6040.005.13/16/18

Inside corner / outside corner 90°



- | Side length inside 130 mm
- | Side length outside 200 mm
- | Sales unit: 1 piece



Model 6040	Mill finish	Plain aluminium	RAL coloured
	Art. no.	Art. no.	Art. no.
	10.6040.390.10	10.6040.390.11	10.6040.390.13/16/18

End cap, left/right



- | For use on the left and right
- | Sales unit: 1 piece

Model 6040	Mill finish	Plain aluminium	RAL coloured
Application	Art. no.	Art. no.	Art. no.
left/right	10.6040.490.10	10.6040.490.11	10.6040.490.13/16/18

Fischer fixing anchor FIS AM M10x150



- | Finish interior application: zinc-plated steel (inside)
- | Finish exterior application: V4A (exterior)
- | Required number per 5000 mm: 25 pieces
- | Sales unit: 25 pieces

Model 3551	zinc-plated steel (inside)	V4A (exterior)
	Art. no.	Art. no.
	91.3551.015.81	91.3551.015.30

TL-6040 | 1.0 KN TOP MOUNT

Extension pin



- | Length: 40 mm
- | Diameter: Ø 6 mm
- | Sales unit: 8 piece

Model 7001	V4A (inside & outside)
Art. no.	
90.7001.640.31	

Fixing anchor for steel



- | Finish interior application: zinc-plated steel (inside)
- | Finish exterior application: V4A (exterior)
- | Required number per 5000 mm: 25 pieces
- | M10 x 60 mm
- | Sales unit: 25 pieces

Model 6040	Zinc-plated steel (interior)	V4A (outside)
Art. no.		Art. no.
91.6040.040.81		91.6040.040.30

Screw anchor for concrete



- | Suitable for our profiles without countersinking
- | Finish interior application: Zinc-plated steel (interior) HUS3-H 10x90
- | Finish exterior application: V4A (outside) HUS3-HR 10x95
- | Tangential screwdriver required

Model 3701	zinc-plated steel (inside)	Model 3701	V4A (exterior)
Sales unit	Art. no.	Sales unit	Art. no.
50	91.3701.090.81	25	91.3701.095.30

FLEXFIT 3.0 kN



- | Fine adjustment of glass panes
- | For glass thicknesses between 21.52 - 31.52 mm
- | Adjustment of up to 34 mm in relation to the vertical axis
- | Pay attention to the right glass thickness!

Length		2500 mm	5000 mm	25 mtr
Glass thickness	Wedge colour	Art. no.	Art. no.	Art. no.
10/10/4 (21.52 mm)	blue	90.0502.422.00	90.0505.422.00	90.0525.422.00
12/12/4 (25.52 mm)	red	90.0502.426.00	90.0505.426.00	90.0525.426.00
15/15/4 (31.52 mm)	green	90.0502.432.00	90.0505.432.00	90.0525.432.00

TL-6041

1.0 kN Side Mount

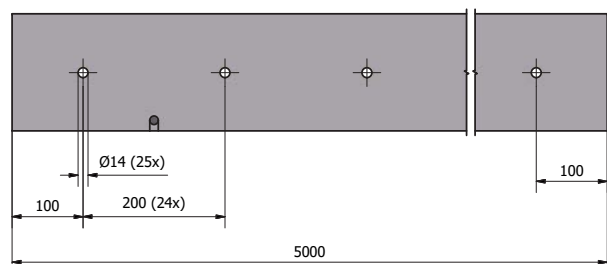
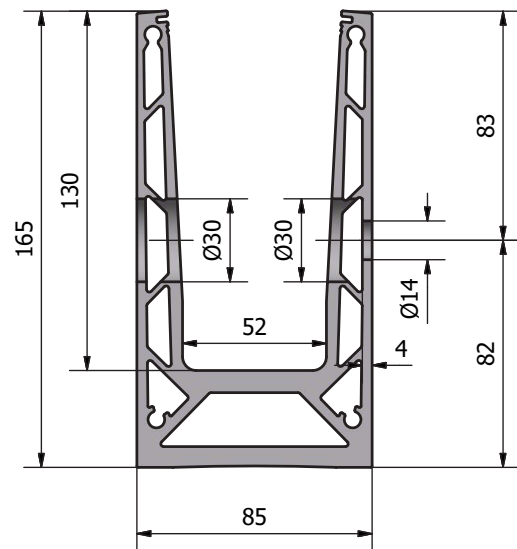
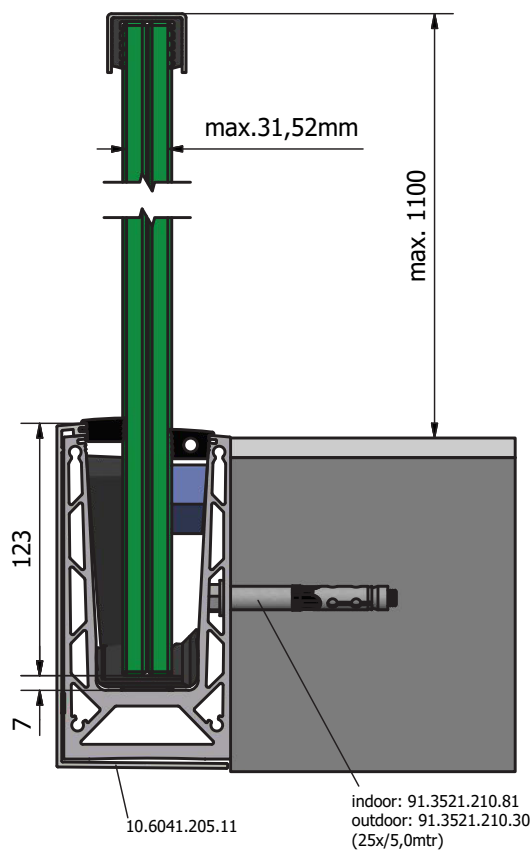
Holy Hänschen.

You can't teach an old dog new tricks?

Wrong. What works on top can also be used on the side. The TL-6041 profile runs like a Swiss clockwork. Developed specifically for the USA and the Alpine region for extremely high loads and efficient installation. Save time and take your advantage.

Essential Features

- | Slimline, elegant design and low-maintenance
- | **ONLEVEL** Flex-Fit Glass Adjustment Tool
- | Extension pin holes
- | Drainage holes
- | Cover (optional)
- | Integrated multifunctional sophisticated chamber
- | For glass thicknesses between 21.52 - 31.52 mm





Mount directly onto steel
or concrete



Side mount

Integrated multifunctional
sophisticated chamber for
enabling larger drilling distances

TL-6041 | 1.0 KN SIDE MOUNT

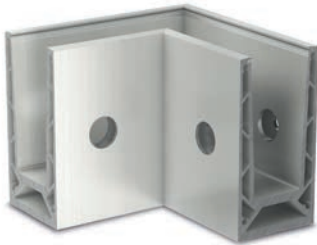
Glass profile



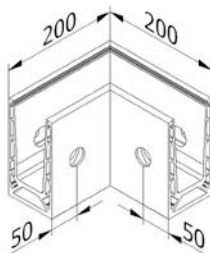
| Height: 165 mm
| Width: 85 mm
| Sales unit: 1 piece

Model 6041	Mill finish	Plain aluminium	RAL coloured
Length	Art. no.	Art. no.	Art. no.
5000	10.6041.005.10	10.6041.005.11	10.6041.005.13/16/18

Inside corner 90°



| Side length inside 115 mm
| Side length outside 200 mm
| Sales unit: 1 piece

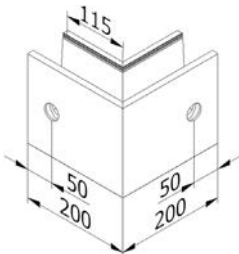


Model 6041	Mill finish	Plain aluminium	RAL coloured
	Art. no.	Art. no.	Art. no.
	10.6041.300.10	10.6041.300.11	10.6041.300.13/16/18

Outside corner 90°



| Side length inside 115 mm
| Side length outside 200 mm
| Sales unit: 1 piece



Model 6041	Mill finish	Plain aluminium	RAL coloured
	Art. no.	Art. no.	Art. no.
	10.6041.350.10	10.6041.350.11	10.6041.350.13/16/18

End cap, left



| For use on the left
| Sales unit: 1 piece

Model 6041	Mill finish	Plain aluminium	RAL coloured
Application	Art. no.	Art. no.	Art. no.
left	10.6041.400.10	10.6041.400.11	10.6041.400.13/16/18

TL-6041 | 1.0 KN SIDE MOUNT

End cap, right



| For use on the right
| Sales unit: 1 piece

Model 6041	Mill finish	Plain aluminium	RAL coloured
Application	Art. no.	Art. no.	Art. no.
right	10.6041.450.10	10.6041.450.11	10.6041.450.13/16/18

End cap, left, with cover cap



| For use on the left
| Sales unit: 1 piece

Model 6041	Mill finish	Plain aluminium	RAL coloured
Application	Art. no.	Art. no.	Art. no.
left	10.6041.410.10	10.6041.410.11	10.6041.410.13/16/18

End cap, right, with cover cap



| For use on the right
| Sales unit: 1 piece

Model 6041	Mill finish	Plain aluminium	RAL coloured
Application	Art. no.	Art. no.	Art. no.
right	10.6041.460.10	10.6041.460.11	10.6041.460.13/16/18

Cover strip



| With mounting strips
| For use with a cover cap, end caps must be ordered separately.
| Sales unit: 1 piece

Model 6041	Mill finish	Plain aluminium	RAL coloured
Length	Art. no.	Art. no.	Art. no.
5000	10.6041.2050.10	10.6041.205.11	10.6041.205.13/16/18

TL-6041 | 1.0 KN SIDE MOUNT

Fischer fixing anchor FH II 12/10



- | Finish interior application: zinc-plated steel (inside)
- | Finish exterior application: V4A (exterior)
- | Required number per 2500 mm: 13 pieces
- | Sales unit: 50 pieces

Model 3521	zinc-plated steel (inside)	V4A (exterior)
	Art. no.	Art. no.
	91.3521.210.81	91.3521.210.30

Fixing anchor for steel



- | Finish interior application: zinc-plated steel (inside)
- | Finish exterior application: V4A (exterior)
- | Required number per 2500 mm: 13 pieces
- | M10 x 60 mm
- | Sales unit: 13 pieces

Model 6041	zinc-plated steel (inside)	V4A (exterior)
	Art. no.	Art. no.
	91.6041.060.81	91.6041.060.30

Rampa fixing anchor for wood



- | Finish interior application: zinc-plated steel (inside)
- | Required number per 2500 mm: 13 pieces
- | M12
- | Sales unit: 13 pieces

Model 6041	zinc-plated steel (inside)
	Art. no.
	91.6041.800.81



Screw anchor for concrete



- | Suitable for our profiles without countersinking
- | Finish interior application: Zinc-plated steel (interior) HUS3-H 10x90
- | Finish exterior application: V4A (outside) HUS3-HR 10x95
- | Tangential screwdriver required

Model 3701	zinc-plated steel (inside)	Model 3701	V4A (exterior)
Sales unit	Art. no.	Sales unit	Art. no.
50	91.3701.090.81	25	91.3701.095.30

TL-6041 | 1.0 KN SIDE MOUNT

FLEXFIT 3.0 kN



- | Fine adjustment of glass panes
- | For glass thicknesses between 21.52 - 31.52 mm
- | Adjustment of up to 34 mm in relation to the vertical axis
- | Pay attention to the right glass thickness!

Length		2500 mm	5000 mm	25 mtr
Glass thickness	Wedge colour	Art. no.	Art. no.	Art. no.
10/10/4 (21.52 mm)	blue	90.0502.422.00	90.0505.422.00	90.0525.422.00
12/12/4 (25.52 mm)	red	90.0502.426.00	90.0505.426.00	90.0525.426.00
15/15/4 (31.52 mm)	green	90.0502.432.00	90.0505.432.00	90.0525.432.00



Regal Balustrades Ltd

Unit 7, Eagles Wood Business Park,
Woodlands Lane, Bradley Stoke,
Bristol, BS32 4EU

T: +44 117 935 3888

E: sales@regalbalustrades.co.uk

www.regalbalustrades.co.uk