



Model 3010 | 3030

## 0.74KN AND 3.0KN TOP MOUNT

- | Quick and simple mounting
- | Different finishes
- | For glass thicknesses between 12 - 31,52 mm
- | Drainage holes
- | Private, commercial, public areas and commercial high frequented areas



ONLEVEL distributed by:

# TL-3010

0.74 kN Top Mount

## Your Choice. Our Power.

The TL-3010 F-profile – one of the most powerful products in the 0.74 kN application range. The model is very well suited for balconies and terraces – it enables an especially small edge distance and therefore gains valuable additional space on the deck itself. Moreover, this system is ideally suited for new installations under screed. Of course, the relevant distances between drill holes have been taken into account.

The F-profile can withstand a linear load of 0.74 kN and is suitable for glass thicknesses between 12 mm and 21.52 mm.

## Essential Features

- | Slimline, elegant design and low-maintenance
- | ONLEVEL FLEXFIT Glass Adjustment Tool
- | Drainage holes
- | Top Cover (optional)
- | For glass thicknesses between 12 - 21.52 mm

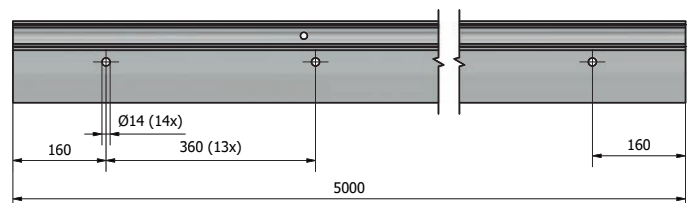
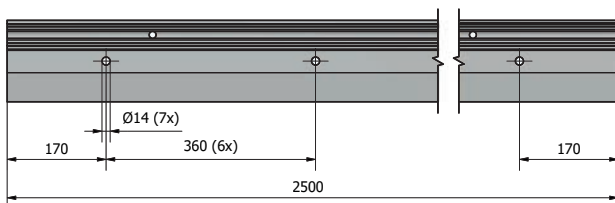
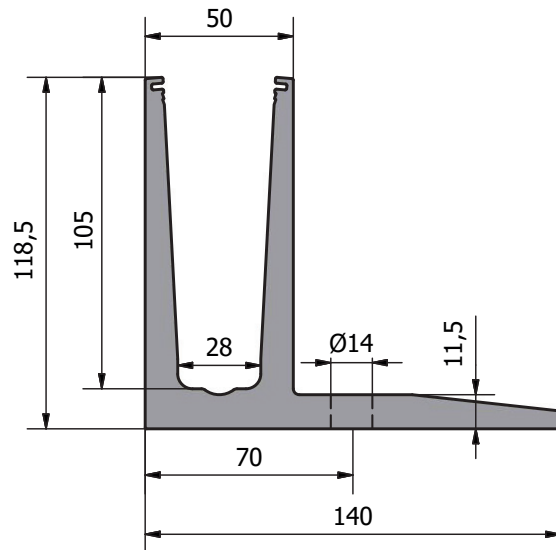
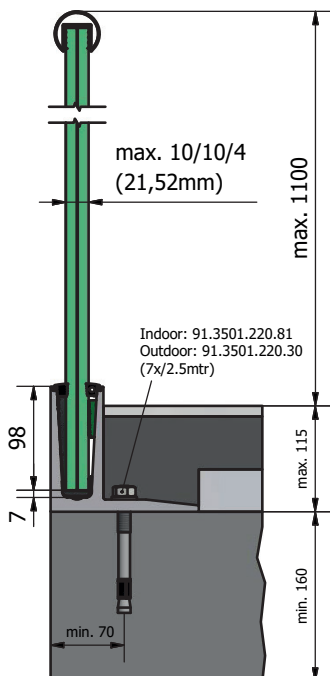


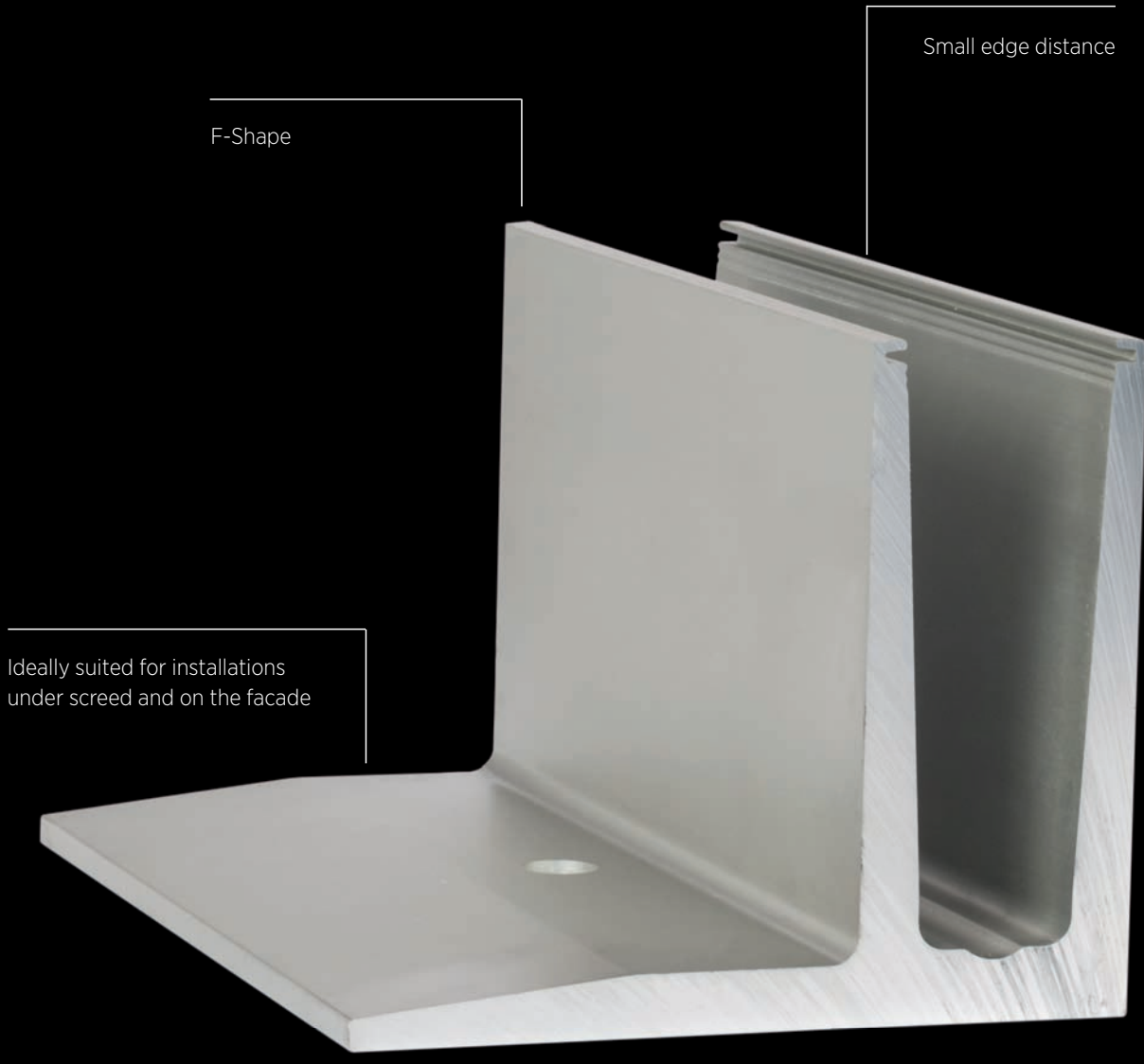
**bimobject**® CAD IN EVERY FORMAT

TESTED according to BS6180

CE EN1090-1 EN1090-3 EXC 3

riba product selector





F-Shape

Small edge distance

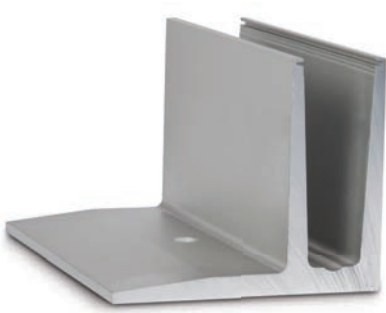
Ideally suited for installations  
under screed and on the facade



Top mount

# TL-3010 | 0.74 KN TOP MOUNT

## Glass profile



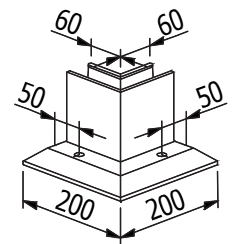
| Sales unit: 1 piece

Model 3010	Mill finish	Plain aluminium	RAL coloured
Length	Art. no.	Art. no.	Art. no.
2500	-	10.3010.002.11	-
5000	10.3010.005.10	10.3010.005.11	10.3010.005.13/16/18

## Inside corner 90°



| Side length inside: 60 mm  
| Side length outside: 200 mm  
| Sales unit: 1 piece

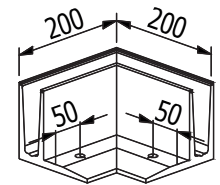


Model 3010	Mill finish	Plain aluminium	RAL coloured
	Art. no.	Art. no.	Art. no.
	10.3010.300.10	10.3010.300.11	10.3010.300.13/16/18

## Outside corner 90°



| Side length inside: 60 mm  
| Side length outside: 200 mm  
| Sales unit: 1 piece



Model 3010	Mill finish	Plain aluminium	RAL coloured
	Art. no.	Art. no.	Art. no.
	10.3010.350.10	10.3010.350.11	10.3010.350.13/16/18

## Cover strip



| Sales unit: 1 piece

Model 3010	Mill finish	Plain aluminium	RAL coloured
Length	Art. no.	Art. no.	Art. no.
5000	10.3010.205.10	10.3010.205.11	10.3010.205.13/16/18

# TL-3010 | 0.74 KN TOP MOUNT

## End cap, left



| For use on the left  
| Sales unit: 1 piece

Model 3010	Mill finish	Plain aluminium	RAL coloured
Application	Art. no.	Art. no.	Art. no.
left	10.3010.400.10	10.3010.400.11	10.3010.400.13/16/18

## End cap, right



| For use on the right  
| Sales unit: 1 piece

Model 3010	Mill finish	Plain aluminium	RAL coloured
Application	Art. no.	Art. no.	Art. no.
right	10.3010.450.10	10.3010.450.11	10.3010.450.13/16/18

## End cap, left staircase



| For use on the left  
| can be cut to size  
| Sales unit: 1 piece

Model 3010	Mill finish	Plain aluminium	RAL coloured
Application	Art. no.	Art. no.	Art. no.
left	10.3010.401.10	10.3010.401.11	10.3010.401.13/16/18

## End cap, right staircase



| For use on the right  
| can be cut to size  
| Sales unit: 1 piece

Model 3010	Mill finish	Plain aluminium	RAL coloured
Application	Art. no.	Art. no.	Art. no.
right	10.3010.451.10	10.3010.451.11	10.3010.451.13/16/18

# TL-3010 | 0.74 KN TOP MOUNT

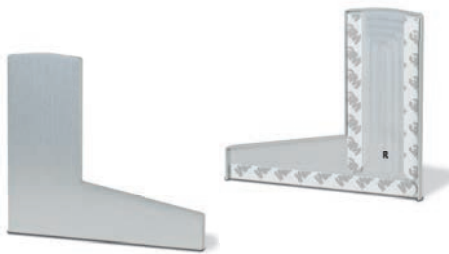
## End cap with cover strip, left



| For use on the left  
| Sales unit: 1 piece

Model 3010	Mill finish	Plain aluminium	RAL coloured
Application	Art. no.	Art. no.	Art. no.
left	10.3010.410.10	10.3010.410.11	10.3010.410.13

## End cap with cover strip, right



| For use on the right  
| Sales unit: 1 piece

Model 3010	Mill finish	Plain aluminium	RAL coloured
Application	Art. no.	Art. no.	Art. no.
right	10.3010.460.10	10.3010.460.11	10.3010.460.13

## Fischer fixing anchor FAZ II 12/20



| Finish interior application: zinc-plated steel (inside)  
| Finish exterior application: V4A (exterior)  
| Required number per 2500 mm: 7 pieces  
| M12  
| Sales unit: 20 pieces

Model 3501	zinc-plated steel (inside)	V4A (exterior)
	Art. no.	Art. no.
	91.3501.220.81	91.3501.220.30

## Fixing anchor for steel



| Finish interior application: zinc-plated steel (inside)  
| Finish exterior application: V4A (exterior)  
| Required number per 2500 mm: 7 pieces  
| M12 x 50 mm  
| Sales unit: 7 pieces

Model 3010	zinc-plated steel (inside)	V4A (exterior)
	Art. no.	Art. no.
	91.3010.050.81	91.3010.050.30

# TL-3010 | 0.74 KN TOP MOUNT

## Rampa fixing anchor for wood



- | Finish interior application: zinc-plated steel (inside)
- | Required number per 2500 mm: 7 pieces
- | M12
- | Sales unit: 7 pieces

<b>Model 3010</b>	<b>zinc-plated steel (inside)</b>
Art. no.	
91.3010.800.81	



## FLEXFIT 1.0 kN



- | Fine adjustment of glass panes
- | For glass thicknesses between 12 - 21.52 mm
- | Adjustment of up to 34 mm in relation to the vertical axis
- | Pay attention to the right glass thickness!

Length		2500 mm	5000 mm	25 mtr
Glass thickness	Wedge colour	Art. no.	Art. no.	Art. no.
12 mm	black	90.0502.112.00	90.0505.112.00	90.0525.112.00
6/6/2 (12.76 mm)	red	90.0502.113.00	90.0505.113.00	90.0525.113.00
6/6/4 (13.52 mm)	grey	90.0502.114.00	90.0505.114.00	90.0525.114.00
15 mm	yellow	90.0502.115.00	90.0505.115.00	90.0525.115.00
<b>8/8/2 (16.76 mm)</b>	brown	90.0502.117.00	90.0505.117.00	90.0525.117.00
<b>8/8/4 (17.52 mm)</b>	green	90.0502.118.00	90.0505.118.00	90.0525.118.00
19 mm	blue	90.0502.119.00	90.0505.119.00	90.0525.119.00
<b>10/10/2 (20.76 mm)</b>	red	90.0502.121.00	90.0505.121.00	90.0525.121.00
<b>10/10/4 (21.52 mm)</b>	green	90.0502.122.00	90.0505.122.00	90.0525.122.00

# TL-3030

3.0 kN Top Mount

## Front Row.

With the TL-3030 F-profile you sit in the front row. You have the best seat and the best view in the house. TL-3030 was designed to support highest loads and is suitable both for interior and exterior applications. It can withstand linear loads of more than 3.0 kN and is appropriate for glass thicknesses between 21.52 mm and 31.52 mm. It has an outstanding resilience and was kept as minimalistic as possible as far as the design is concerned. With TL-3030 you always hold the better cards.

## Essential Features

- | Slimline, elegant design and low-maintenance
- | ONLEVEL FLEXFIT Glass Adjustment Tool
- | Drainage holes
- | For glass thicknesses between 21.52 - 31.52 mm
- | For applications in the public area

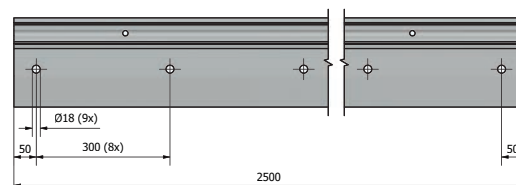
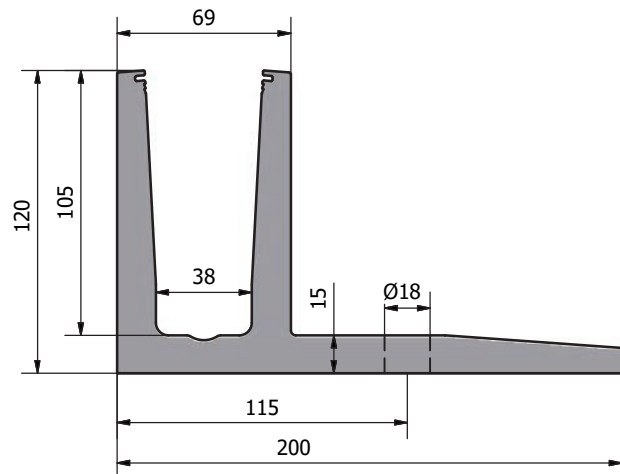
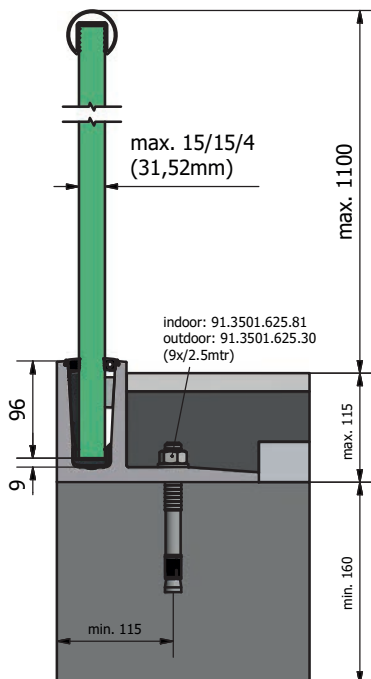


**bimobject**® CAD IN EVERY FORMAT

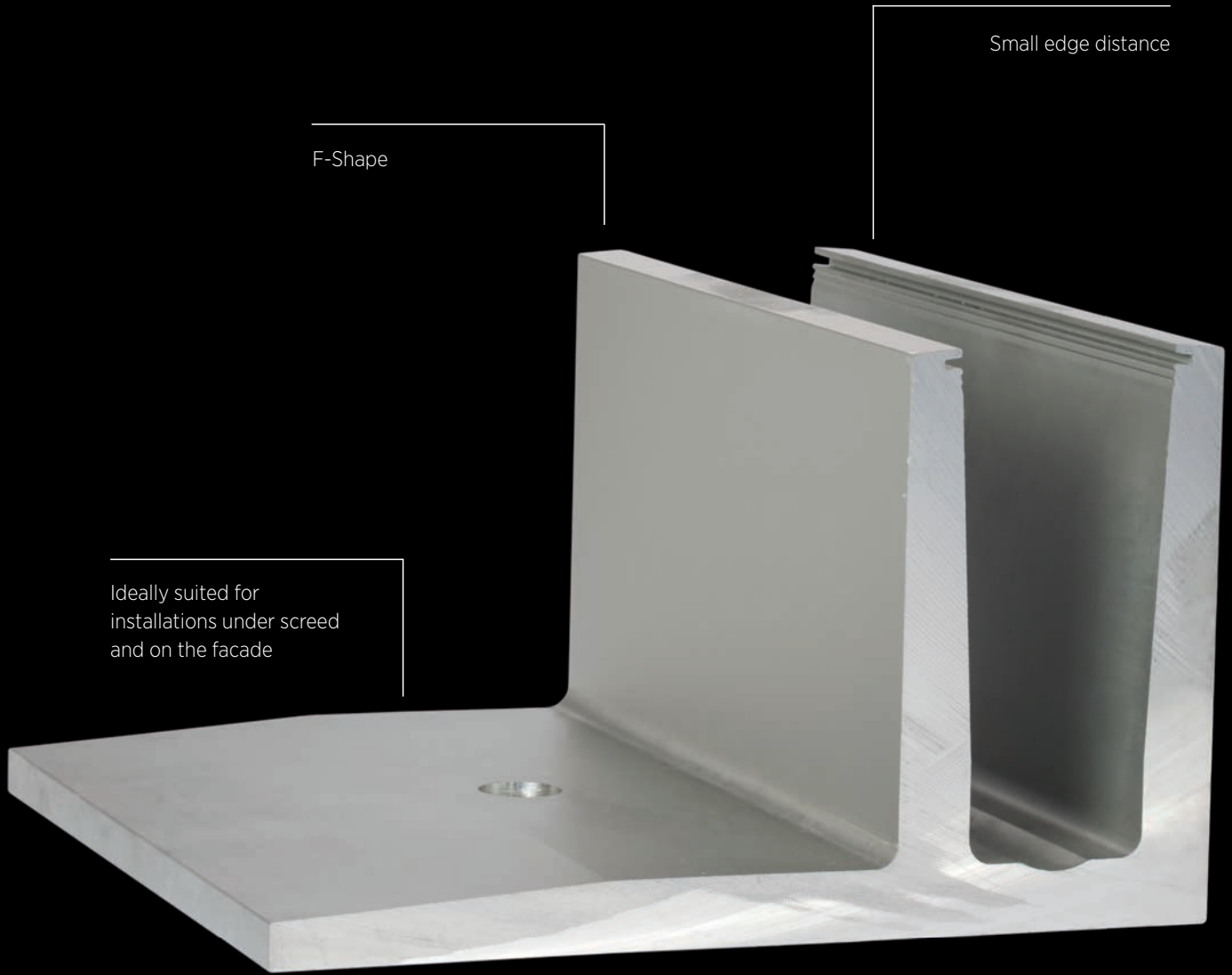
TESTED  
according to  
BS6180

CE EN1090-1  
EN1090-3  
EXC 3

riba  
product  
selector







F-Shape

Small edge distance

Ideally suited for  
installations under screed  
and on the facade

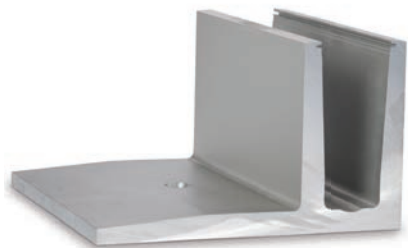


Top mount



# TL-3030 | 3.0KN TOP MOUNT

## Glass profile



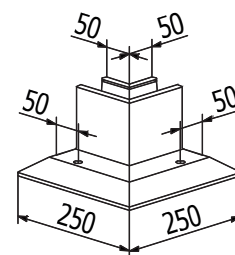
| Height: 120 mm  
| Width 200 mm  
| Sales unit: 1 piece

Model 3030	Plain aluminium
Length	Art. no.
2500	10.3030.002.11

## Inside corner 90°



| Side length inside: 50 mm  
| Side length outside: 250 mm  
| Sales unit: 1 piece

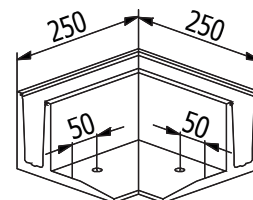


Model 3030	Plain aluminium
	Art. no.
	10.3030.300.11

## Outside corner 90°



| Side length inside: 50 mm  
| Side length outside: 250 mm  
| Sales unit: 1 piece



Model 3030	Plain aluminium
	Art. no.
	10.3030.350.11

## End cap, left



| For use on the left  
| Sales unit: 1 piece

Model 3030	Plain aluminium
Application	Art. no.
left	10.3030.400.11

# TL-3030 | 3.0KN TOP MOUNT

## End cap, right



| For use on the right  
| Sales unit: 1 piece

Model 3030	Plain aluminium
Application	Art. no.
right	10.3030.450.11

## Fischer fixing anchor FAZ II 16/25



| Finish interior application: zinc-plated steel (inside)  
| Finish exterior application: V4A (exterior)  
| Required number per 2500 mm: 9 pieces  
| M16

Model 3501	zinc-plated steel (inside)	Model 3501	V4A (exterior)
Sales unit:	Art. no.	Sales unit:	Art. no.
10	91.3501.625.81	20	91.3501.625.30

## Fixing anchor for steel



| Finish interior application: zinc-plated steel (inside)  
| Finish exterior application: V4A (exterior)  
| Required number per 2500 mm: 9 pieces  
| M12 x 50 mm  
| Sales unit: 9 piece

Model 3030	zinc-plated steel (inside)	V4A (exterior)
	Art. no.	Art. no.
	91.3030.050.81	91.3030.050.30

## Rampa fixing anchor for wood



| Finish interior application: zinc-plated steel (inside)  
| Required number per 2500 mm: 12 pieces  
| M16  
| Sales unit: 12 piece

Model 3030	zinc-plated steel (inside)
	Art. no.
	91.3030.800.81



# TL-3030 | 3.0KN TOP MOUNT

## FLEXFIT 3.0 kN



- | Fine adjustment of glass panes
- | For glass thicknesses between 21.52 - 31.52 mm
- | Adjustment of up to 34 mm in relation to the vertical axis
- | Pay attention to the right glass thickness!

Length		2500 mm	5000 mm	25 mtr
Glass thickness	Wedge colour	Art. no.	Art. no.	Art. no.
10/10/4 (21.52 mm)	blue	90.0502.322.00	90.0505.322.00	90.0525.322.00
12/12/4 (25.52 mm)	red	90.0502.326.00	90.0505.326.00	90.0525.326.00
15/15/4 (31.52 mm)	green	90.0502.332.00	90.0505.332.00	90.0525.332.00



### Regal Balustrades Ltd

Unit 7, Eagles Wood Business Park,  
Woodlands Lane, Bradley Stoke,  
Bristol, BS32 4EU

T: +44 117 935 3888

E: [sales@regalbalustrades.co.uk](mailto:sales@regalbalustrades.co.uk)

[www.regalbalustrades.co.uk](http://www.regalbalustrades.co.uk)